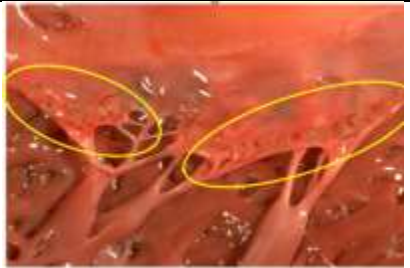
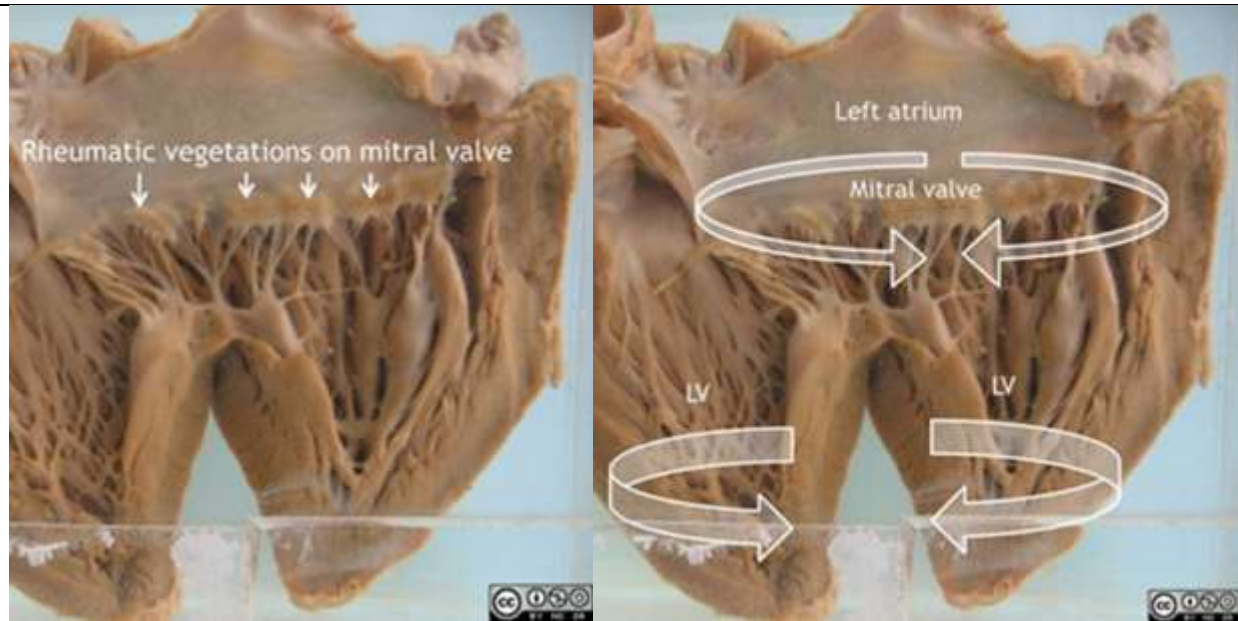


XV. Diseases of the Cardiovascular System
133

Endocarditis, Rheumatic (acute)		T - 4.319
Heart:	<ul style="list-style-type: none"> • Is enlarged 	
Mitral cusps:	<ul style="list-style-type: none"> • Swollen • Edematous • Show vegetations 	
Vegetations:	<ul style="list-style-type: none"> • Appear at the line of closure (fortified line) • Form a single row 2 mm. • From the tips of cusps • Very small or minute (pin's-head) in size • Rounded in shape • Semi-translucent • Pinkish-grey • Firm in consistence • Adherent to the underlying tissue 	



N.B.:

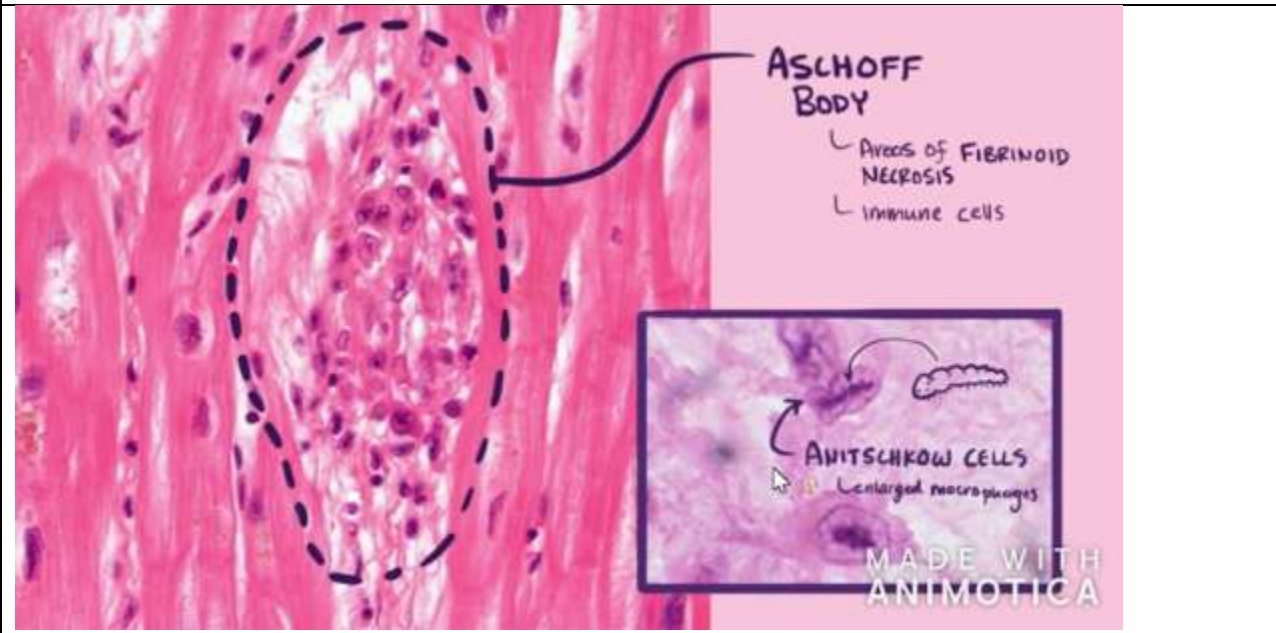
The valves are affected in the following order of frequency:

- Mitral;
- Aortic;
- Mitral and aortic;
- Tricuspid;
- Pulmonary.

- The specific reaction of rheumatic disease is the "**Aschoff body**".
- In rheumatic heart disease there occurs

Pancarditis:

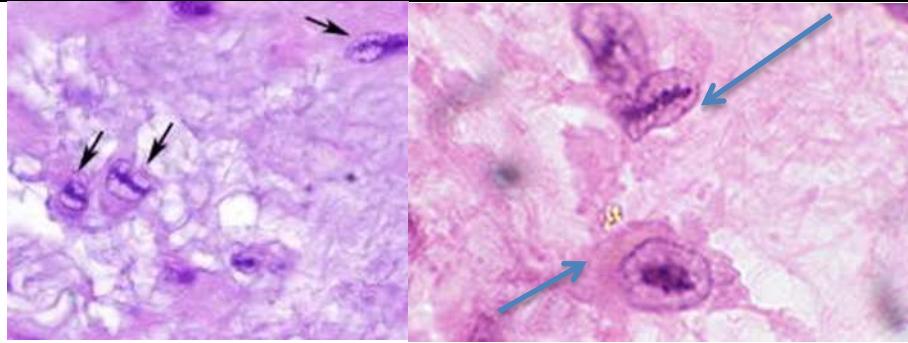
1. **Pericarditis.**
2. **Myocarditis.**
3. **Endocarditis**



Other organs which may be affected include:

• Joints:	Arthritis.			
• Brain:	Meningoencephalitis. Chorea.			
• Skin:	Nodules.			
• Lung. • Pleura. • Visceral vessels. • Pharynx and tonsils. • Peritoneum. • Tendons and muscles.				

- The essential lesion in the rheumatic heart is the "**endocarditis**"
- Especially at the valves (**Valvulitis**).
- The production of vegetations is a secondary process (an epiphenomenon) due to a secondary factor which is **trauma**.



Anitschkow cells (caterpillar nuclei) & Owl eye nuclei

