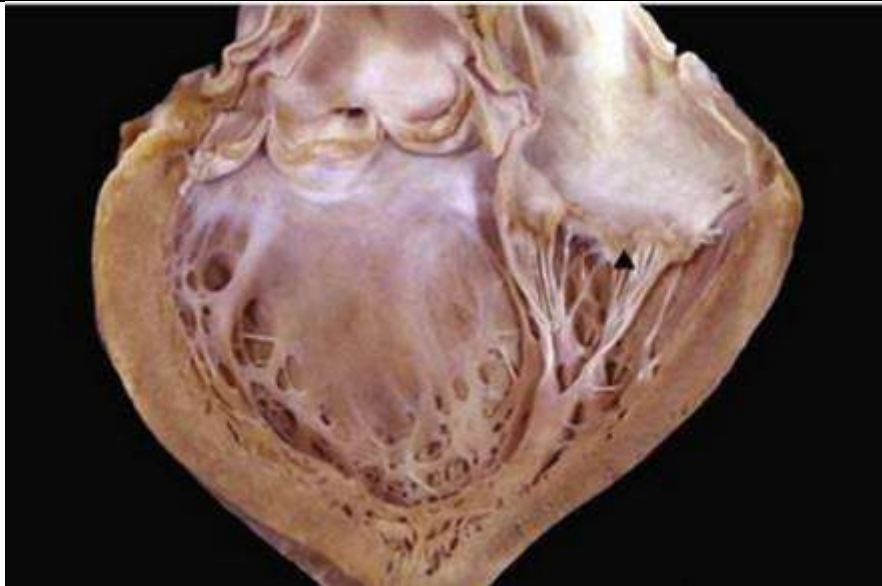


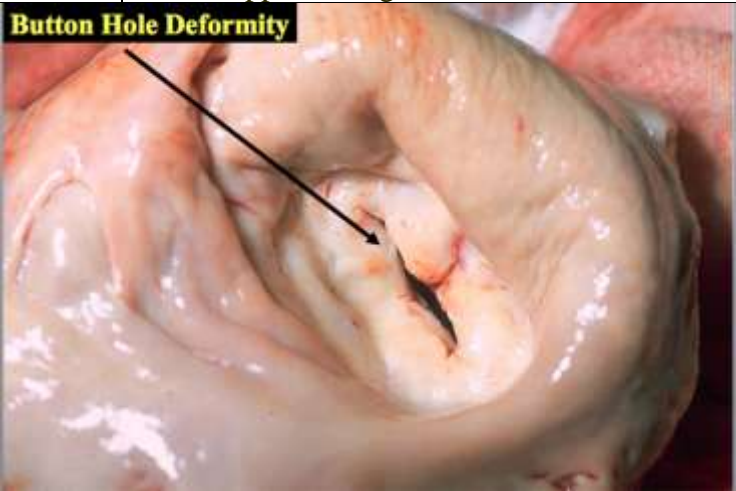

XV. Diseases of the Cardiovascular System

Endocarditis, Rheumatic (chronic)		T-4, 346		
Heart:	<ul style="list-style-type: none"> • Is enlarged 			
Chorda tendinae:	<ul style="list-style-type: none"> • Short 			
Tricuspid valve:	<ul style="list-style-type: none"> • Cusps show vegetations 			
Vegetations:	<ul style="list-style-type: none"> • Few Minute (very small) • Pale yellowish-grey • Along line of contact • Adherent and characteristic of the acute phase 			
Mitral valve:	Orifice:	<ul style="list-style-type: none"> • Is exposed from the auricle • Stenosed (narrowed) • Funnel-shaped 		
	Cusps:	<ul style="list-style-type: none"> • Thickened • Opaque • Distorted • Fibrosed • Adherent 		



N.B.:

- **The lesion in the tricuspid valve is a recent acute affection.**
- **The lesion in the mitral valve is an old chronic rheumatic affection.**
- In the acute stages, the valves become **hyperaemic, rough, swollen, and dull showing vegetations at the line of contact.**
- In the chronic stages, the valves and orifices show the effect of **subsequent fibrosis and deformity with rigidity.**
- The heart shows the mechanical effects of the deformed valves and openings.

Endocarditis, Rheumatic (chronic)		I- 3.346	
Heart:	Is enlarged		
Tricuspid valve:	Orifice:	<ul style="list-style-type: none"> • <i>Stenosed</i> 	
	Cusps:	<ul style="list-style-type: none"> • Thick • Opaque 	
Mitral valve:	Orifice:	<ul style="list-style-type: none"> • Narrowed • Button-hole-like (slit-like) 	
	Cusps:	<ul style="list-style-type: none"> • Thick • Opaque • Fibrous • No apparent vegetations 	
 <p>Button Hole Deformity</p>			
			

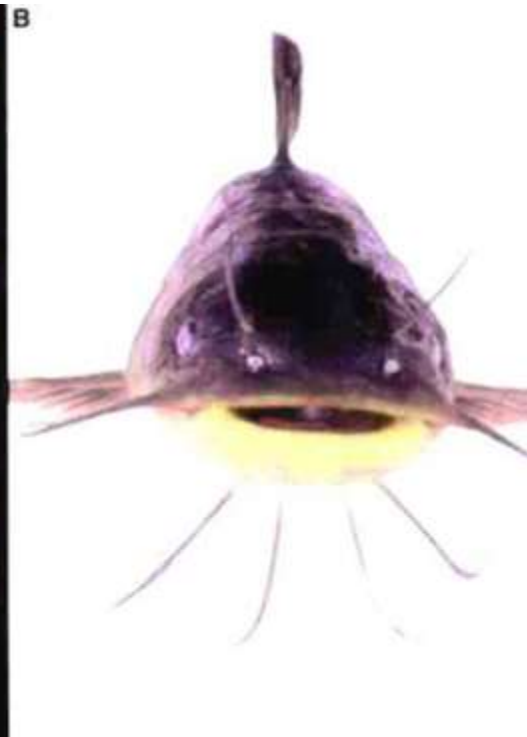
N.B.:

- The mechanical effects of rheumatic affection of the valves in the chronic stage of rheumatic disease will appear in the form of **hypertrophy of the wall and subsequent dilatation of the corresponding chamber.**
- The effects also depend **upon the valve or valves affected** and whether by stenosis or incompetence or both.
- At first hypertrophy is produced and later on dilatation may o



Button hole from the atrial side

Fish mouth appearance from the ventricular side



In general, affection of:

Mitral valve →

enlargement of:

Left auricle.

		Right ventricle and auricle Chronic venous congestion of lung & systemic
Aortic valve →	enlargement of:	The whole heart Chronic venous congestion of lung & systemic
Tricuspid valve →	enlargement of :	Right auricle. Chronic venous congestion systemic
Pulmonary valve →	enlargement of:	Right ventricle and auricle. Chronic venous congestion systemic

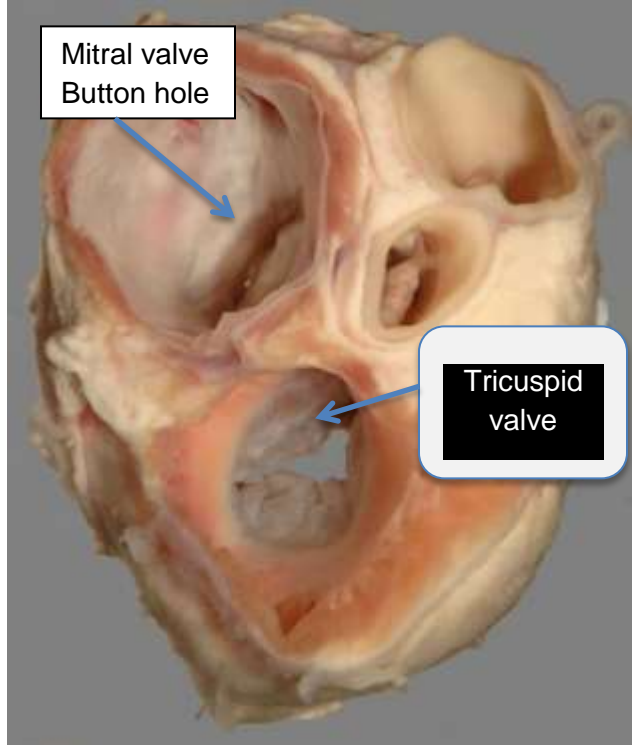
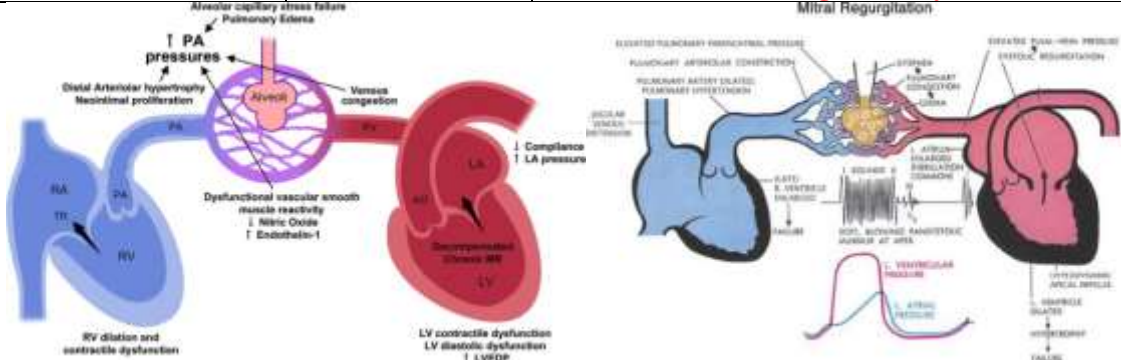
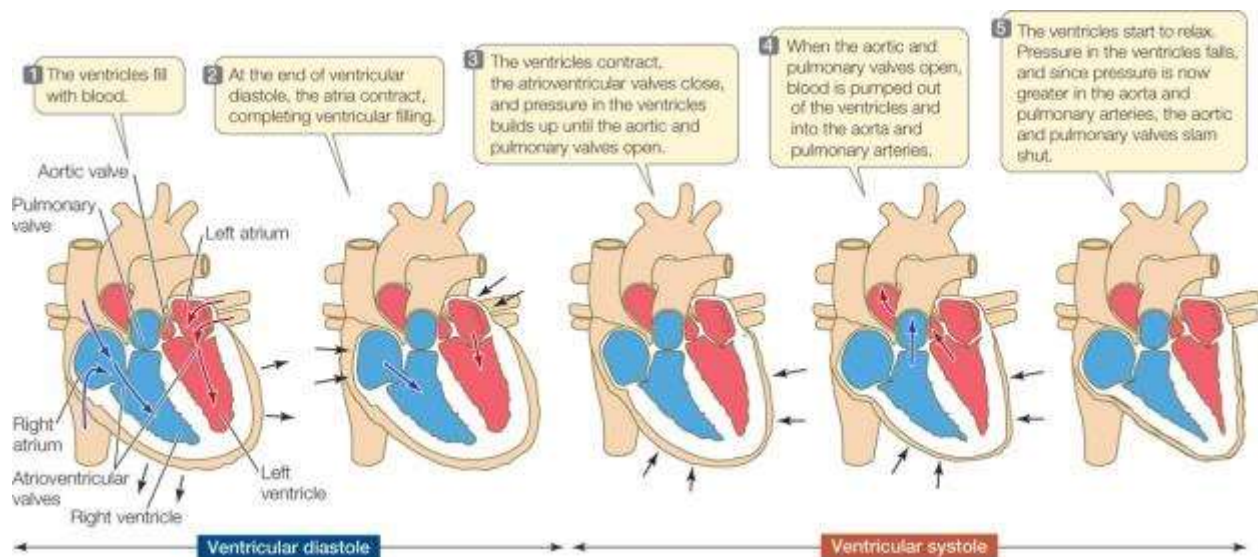


Figure 52
Nature Chronic Rheumatic Heart
Specimen No. 1-4.346
Reference P. 134

Endocarditis, Rheumatic (chronic) - Mitral and Aortic Valves I-3.3466

Heart		Is enlarged
Mitral and aortic valves:	Orifices :	Stenosed Deformed
	Cusps :	Thick Opaque Distorted Fibrosed
N.B. Affection of both mitral and aortic valves is not uncommon.		



LEFT SIDED ♥ FAILURE

- Paroxysmal Nocturnal Dyspnea
- Restlessness
- Confusion
- Elevated Pulmonary Capillary Wedge Pressure
- Orthopnea
- Tachycardia
- Exertional Dyspnea
- Fatigue
- Cyanosis
- Pulmonary Congestion
 - Cough
 - Crackles
 - Wheezes
 - Blood-Tinged Sputum
 - Tachypnea

© 2007 Nursing Education Consultants, Inc.

RIGHT SIDED ♥ FAILURE (Cor Pulmonale)

- Fatigue
- May be secondary to chronic pulmonary problems
- Distended Jugular Veins
- Anorexia & Complaints of GI Distress
- Weight Gain
- Dependent Edema
- ↑ Peripheral Venous Pressure
- Ascites
- Enlarged Liver & Spleen

© 2007 Nursing Education Consultants, Inc.

