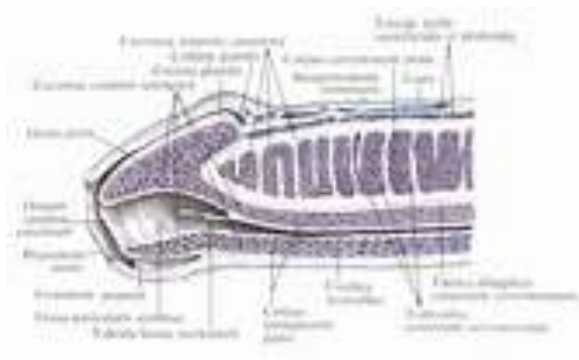
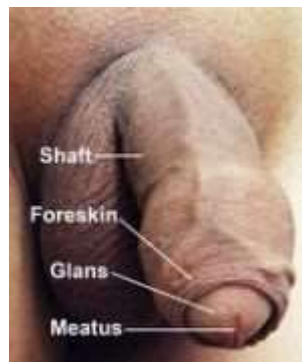
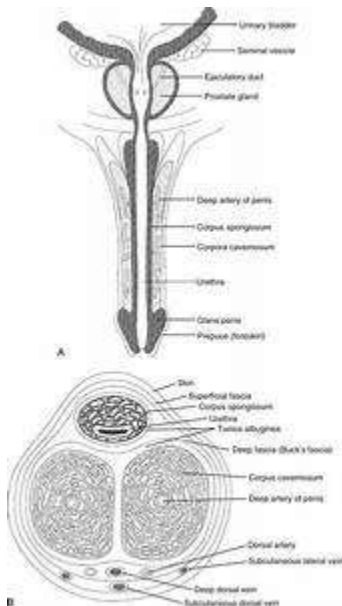


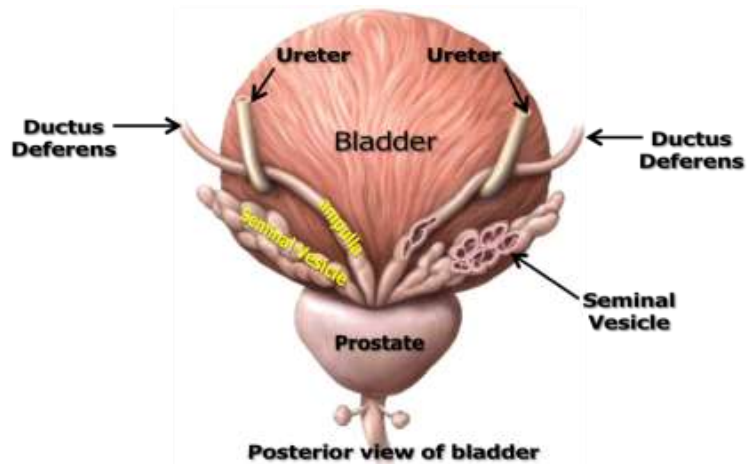
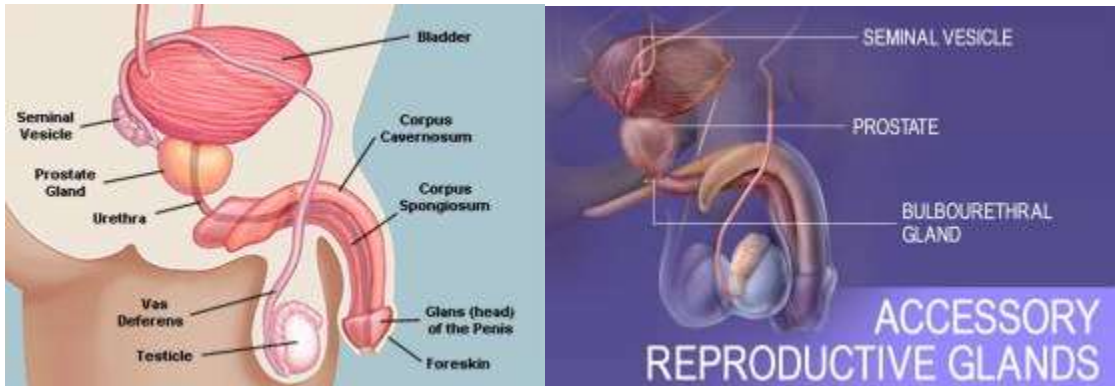
## X. Relevant Normal Features

95

### Prostate and seminal vesicle

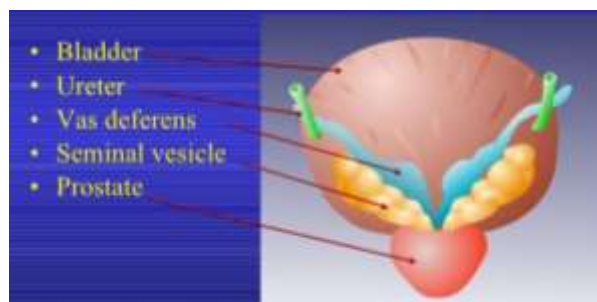
<b>PENIS</b>				
<b>Length:</b>	<i>12—16 cm.</i>			
<b>Composed of</b>	<b>1. Root:</b>	<i>In perineum</i>	<i>3 masses of erectile tissue:</i>	<i>2 crura 1 bulb</i>
	<b>2. Body:</b>	<i>Free Enveloped in skin</i>		
		<i>Three elongated masses of erectile tissue:</i>	<i>2 laterals (corpora cavernosa) 1 medial (corpus spongiosum)</i>	
		<b>Shape:</b>	<i>Cylindrical</i>	
		<b>Surfaces:</b>	<i>Dorsal</i>	
			<i>Ventral (urethral)</i>	
	<b>3. Glans-penis:</b>	<i>Has a projecting margin at base (corona)</i>		
		<i>Skin</i>	<i>Very thin Loose Dark (pigmented)</i>	
			<i>Folded at neck of penis -&gt; prepuce (foreskin)</i>	
			<i>Shows sebaceous material (smegma) on corona</i>	

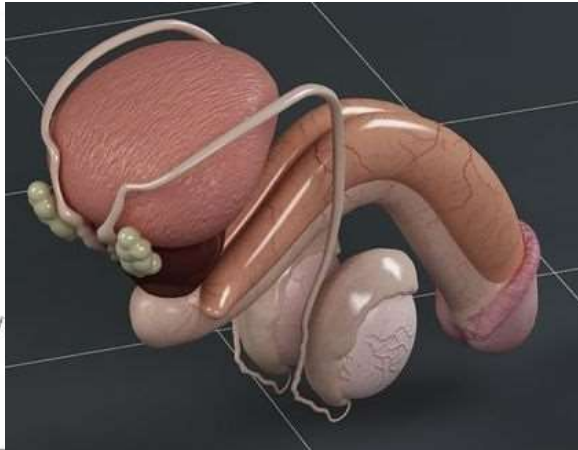
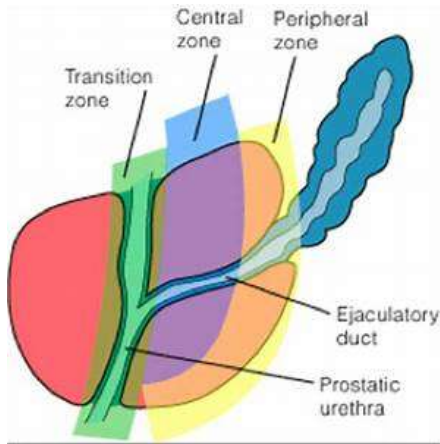




<b>PROSTATE</b>				
	<i>A solid musculo-glandular body Devoid of a distinct capsule Surrounds the commencement of urethra</i>			
	<b>Weight:</b>	<i>18 grams</i>		
	<b>Shape:</b>	<i>Inverted compressed cone Resembles a chest-nut</i>		
	<b>Length:</b>	<i>3 cm. (vertical; base to apex) 4 cm. (transverse across base) 2 cm. (anteroposterior)</i>		
	<b>Measurements</b>	<i>3.5 x 2.5 x 1.5 cm. (average)</i>		
	<b>Consistence:</b>	<i>Firm</i>		
	<b>Colour:</b>	<i>Reddish-grey</i>		
	<b>Cut Surfaces:</b>	<i>Pale grey and homogeneous Minute discrete yellowish-white cystic areas Extruding a milky fluid</i>		
	<b>Apex</b>	<i>Lower end</i>		
	<b>Base</b>	<i>Upper end Urethra enters it nearer to anterior border</i>		
	<b>Surfaces</b>	<b>Laterals:</b>	<i>On either side Highly convex</i>	
		<b>Posterior</b>	<i>Flattened (side-to-side) Slightly convex (above downwards)</i>	

		<b>Anterior:</b>	<i>Convex (side-to-side)</i> <i>Extends from apex to base</i> <i>Narrow</i>
	<b>Lobes</b>	<b>One median:</b>	<i>A portion separating urethra from prostatic utricle</i> <i>Upper Smaller</i> <i>Includes the so-called posterior lobe</i> <i>Forms the floor of the urethra</i> <i>Connected in front of urethra by isthmus</i>
		<b>Two laterals:</b>	<i>Right &amp; left</i> <i>Lower</i> <i>Larger</i>
		<b>Isthmus:</b>	<i>Fibromuscular tissue</i> <i>No glandular tissue</i>
<b>SEMINAL VESICLES</b>			<i>Sacculated pouches</i> <i>Coiled sac-like tube</i> <i>Show lobulations and folds</i>
	<b>Shape :</b>		<i>Pyriform</i>
	<b>Length :</b>		<i>5 cm. (15 cm. when unfolded)</i>
	<b>Measurements :</b>		<i>4 x 1.7 x 0.5 cm. (average)</i>
	<b>Diameter :</b>		<i>0.3-0.5 cm.</i>
	<b>Upper end:</b>		<i>Blunt</i>
	<b>Lower end</b>		<i>Duct</i> <i>Unites with end of vas deferens</i> <i>Lies between bladder and rectum</i> <i>Enclosed in a fascial sheath</i>
	<b>Surfaces</b>		<i>Anterior</i> <i>Posterior</i>





### THE ABNORMAL PROSTATE

**PROSTATITIS**

ACUTE SYMPTOMS OF URINARY INFECTION

OBSTRUCTIVE SYMPTOMS

PERINEAL OR SUPRAPUBIC PAIN

**BENIGN PROSTATIC HYPERPLASIA**

MOST COMMON BENIGN TUMOR IN MEN

OBSTRUCTIVE OR IRRITATIVE VOIDING SYMPTOMS

JUST ONE DROP.

**PROSTATE CANCER**

PROSTATIC INDURATION ON DRE OR ELEVATION OF PSA

RUB RUB

DAGNABBIT AGAIN WITH THE FINGER?!

TYPICALLY ASYMPTOMATIC