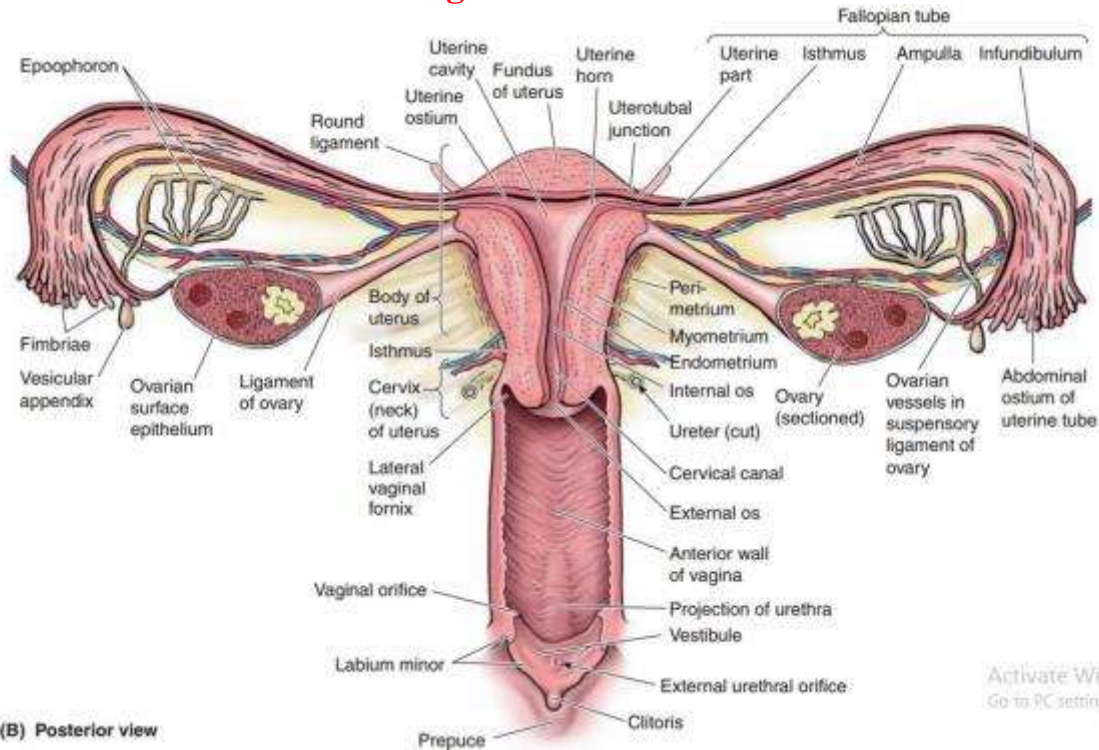
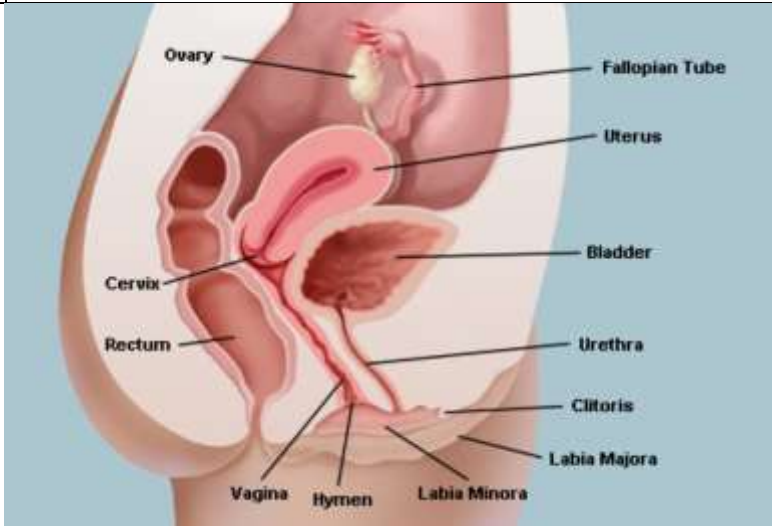


**X. Relevant Normal Features
Vagina and uterus**



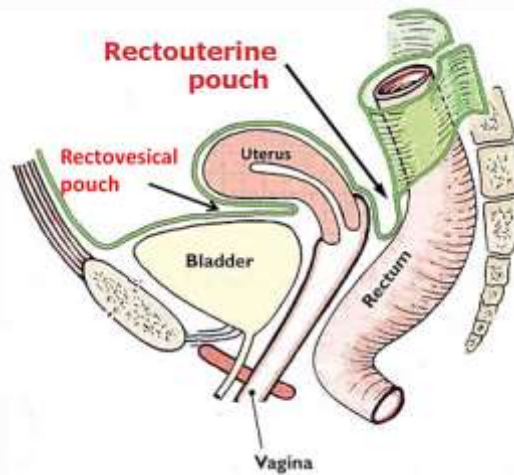
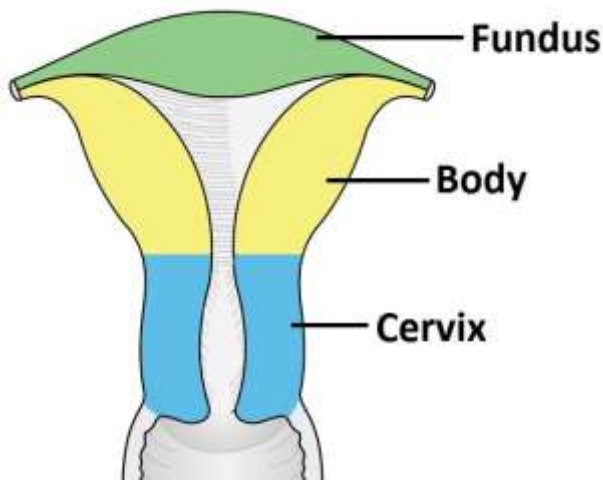
(B) Posterior view

VAGINA			
Length:	7.5 cm. (anterior wall) 9 cm. (posterior wall)		
Walls:	In apposition except at upper end (wider)		
Mucosa:	Rugose Margin of external orifice: pinched up → membranous fold (hymen)		



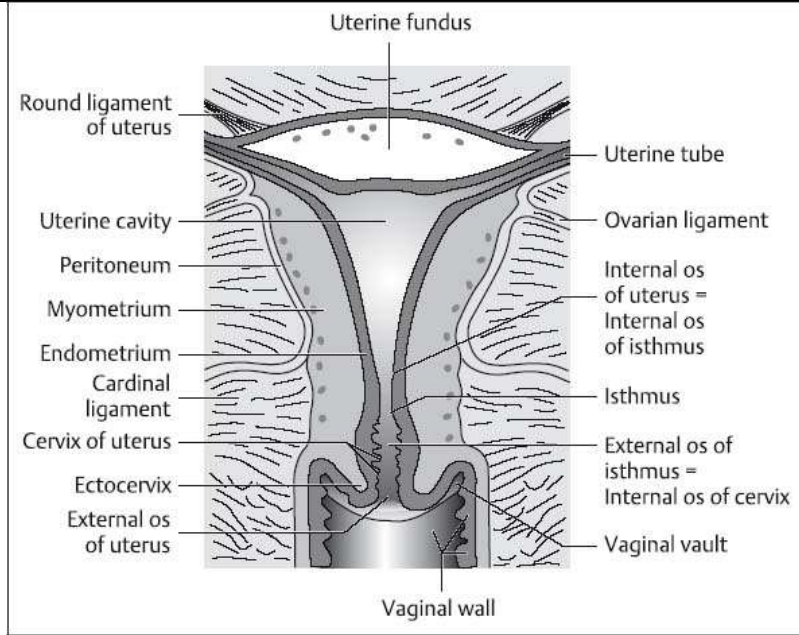
UTERUS	A hollow muscular organ between bladder and rectum
---------------	--

	Thick-walled Pyriform			
Virgin state:	Weight:	30–40 g		
	Length:	7.5 cm.		
	Breadth:	5 cm. (upper part)		
	Thickness:	2.5 cm.		
Divisions:				



	1. Cervix (neck):	<ul style="list-style-type: none"> • Cylindrical • Connects uterus to Vagina • Length: 2-2.5 cm. • Consistence: Firmer than body (more fibrous tissue). • About 1/2 cervix is.: Within cavity of vagina • Clothed with mucous membrane • Encircled by fornix of vagina
	2. Body:	Gradually narrows from fundus to internal os
	3. Fundus:	<ul style="list-style-type: none"> • Free end of body • Rounded • Convex • Its side → uterine tube Intestinal surface → ligament of ovary • Vesical surface → round ligament
	4. Isthmus:	<ul style="list-style-type: none"> • Junction of body with neck • Upper 1/3 of cervix • Lower uterine segment (during pregnancy) • Resembles body more than cervix • Cavity: Narrower than body • Wall : Thick • Shape : Cylindrical • Consistence: Firm
Surfaces :	Anterior (vesical):	Flat
	Posterior (intestinal):	Markedly convex

	Lateral:	Slightly convex margins
Length:	6 cm.	
	Of body:	Triangular, Narrow, Smooth & Pale red
	Of cervix:	Fusiform (spindle-shaped) Flattened (before → backwards) Broader at middle than ends



Openings:	Internal os:	<i>Opens into cavity of body</i>	
	External os:	<i>Opens into vagina</i>	
		<i>Upper posterior lip: Thicker More prominent</i>	
Other features			
In foetus:		<i>Cervix is larger than body</i>	
At puberty:		<i>Uterus is pyriform in shape</i>	
	Weight:	<i>1417 grams</i>	
Menstruations:	Uterus:	<i>Enlarged More vascular</i>	
		<i>Surfaces: Rounded External os: Rounded Lips: Swollen</i>	
	Endometrium:	<i>Thicker Softer Darker</i>	
	Nulliparous:	<i>Os: A slit Small Transverse Lips: Smooth Rounded Mucosa: Folds</i>	

	Pregnancy:	Much enlarged	
	Post-partum:	Size:	About usual
		Weight:	42 grams
		Cavity:	Larger
		Vessels:	Tortuous
		Myometrium:	More defined
		External os:	More prominent
		Edges:	Fissured
	Multiparous:	Os:	Wider
		Lips:	Irregular
		Mucosa:	No folds
	Old age:		
	Atrophied (5 x 3 x 2 cm.)		
	Paler		
	Denser in texture		
	A distinct constriction separates body from cervix		
	Internal os:	Obliterated	
	Lips:	Disappeared	

