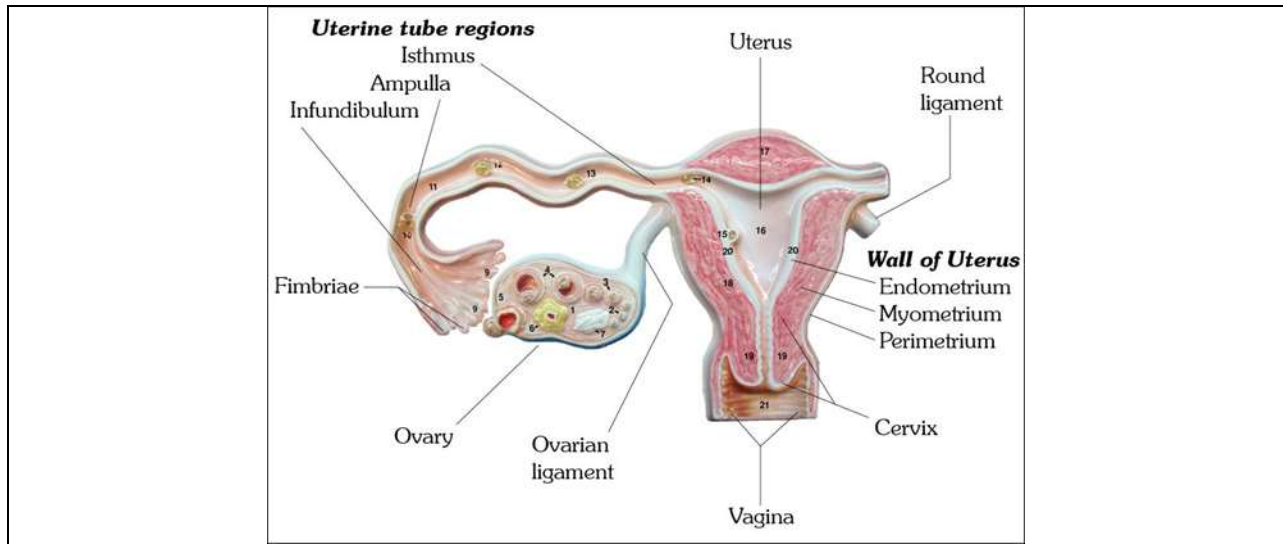


**X. Relevant Normal Features
Ovaries**

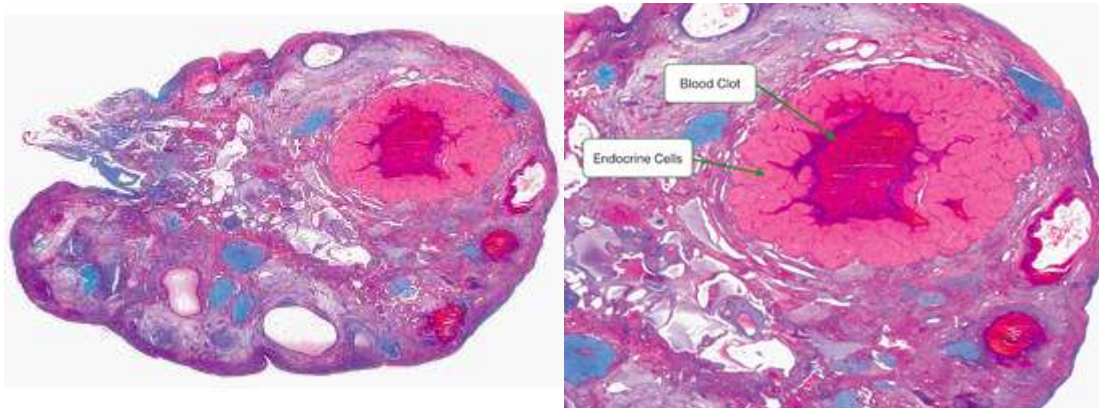


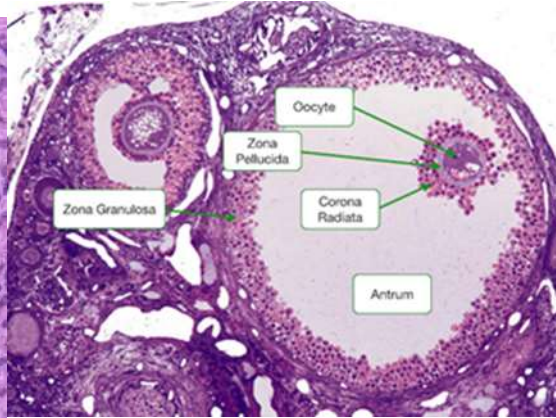
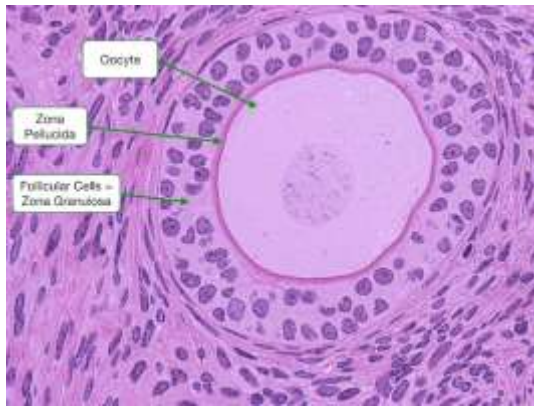
UTERINE TUBE			
	Length :	10 cm.	
	Width :	0.6 cm.	
Divisions:	1. Intramural:	<i>In muscular wall of uterus</i>	
	2. Isthmus:	<i>Medial 2-3 cm. outside uterus</i>	
		<i>Straight Round (cord-like) Narrow</i>	
	3. Ampulla :	Length:	<i>1/2 the tube</i>
		<i>Wide Sacculated Slightly convoluted Tortuous Thin-walled</i>	
	4. Infundibulum:	<i>Terminal part Funnel-shaped Opens into peritoneal cavity Breaks up into fimbriae</i>	
Openings:	Into:	<i>Anterior angle of uterine cavity between body and fundus Very small Peritoneal cavity (pelvic ostium) Diameter: 0.3 cm. Fimbriated end</i>	
	Mucosa:	<i>With longitudinal folds specially in ampulla</i>	

OVARIES	<i>On each side of the pelvis</i>		
	Weight:	4-8 g. (each)	
	Shape and size:	Almond-like with a hilum	
	Length:	3-4 cm	
	Width:	1.5-2.5 cm	
	Thick ness:	1.2 cm	
	Ends:	Tubal Uterine	
	Surfaces:	Medial Lateral	
	Borders:	Free	Convex
		Mesovarian:	Straight

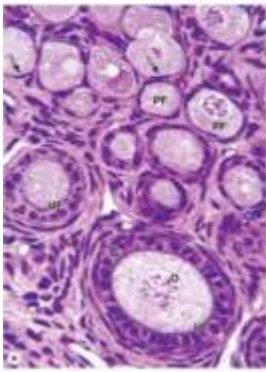


... Other features of the ovaries		
Before ovulation (young nulliparous):	Smooth Greyish-pink	
Later on:	Puckered Scarred Grey	
Old women :	Shrunken Wrinkled Atrophied (2x 1 x 0.5 cm.)	

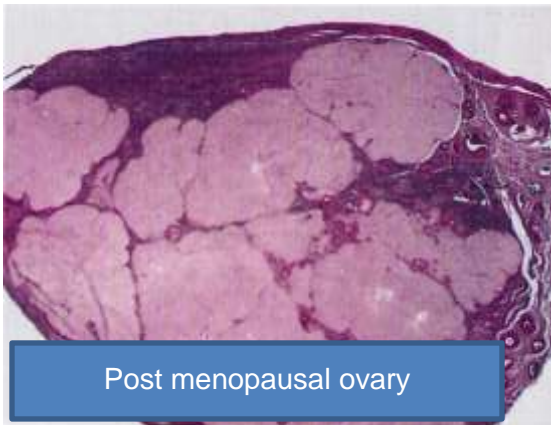
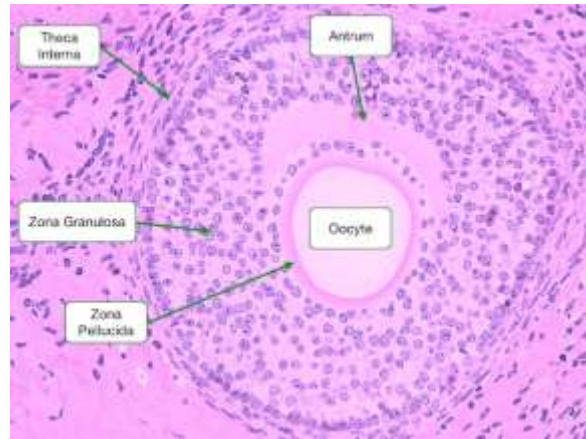




Primary Follicle



- Growing follicles include:
- Uni-laminar primary follicle
- Multi-laminar primary follicle
- Antral follicle.
- As follicles started growth three things change:
- Oocyte
- Follicular cells
- Surrounding stroma



Post menopausal ovary

