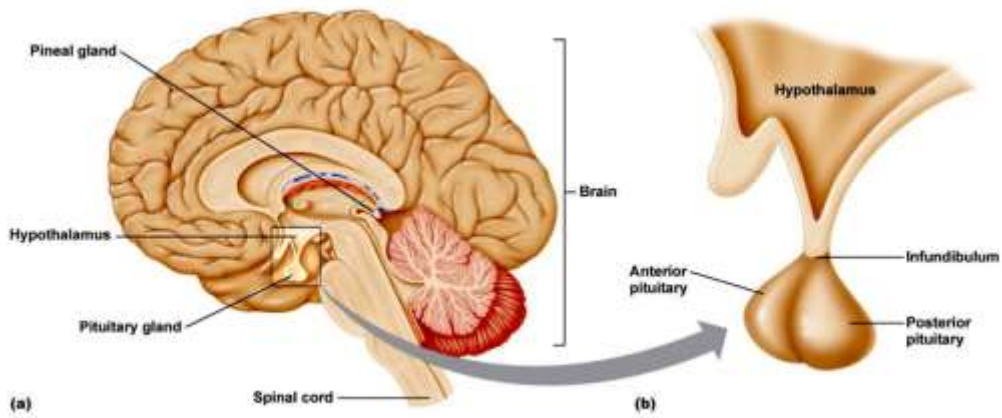
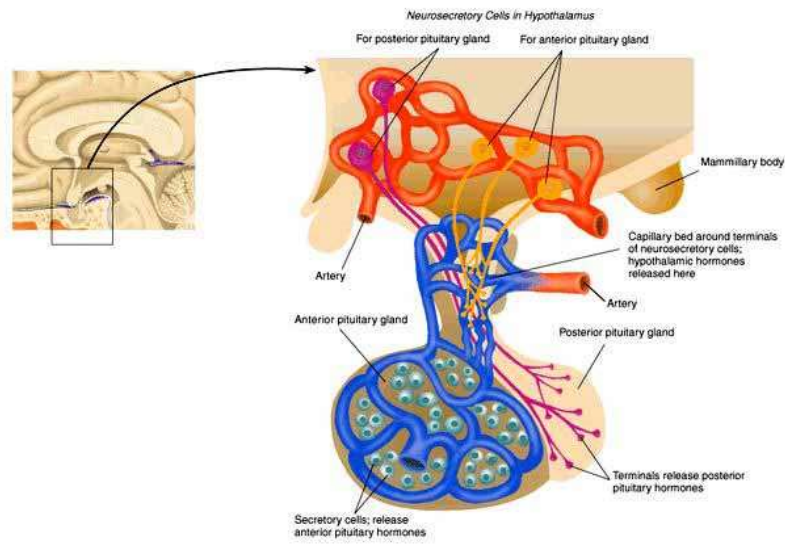


**X. Relevant Normal Features
Pituitary & Pineal body**

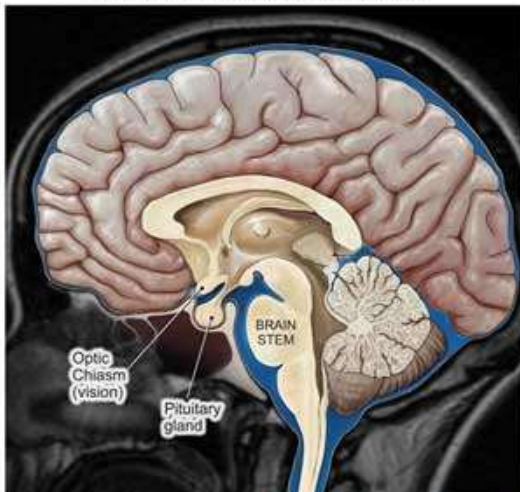
PITUITARY GLAND	
<ul style="list-style-type: none"> Lies in hypophyseal fossa of sphenoid bone Roofed by diaphragma sellae Connected with base of brain by infundibulum 	
Weight:	0.5-0.8 g.
Size:	Large pea-like
	Length: 0.8 cm.
	Breadth: 1.2 cm.
Shape:	<ul style="list-style-type: none"> Ovoid Slightly flattened above-down wards) Reddish-grey
Lobes:	
1- Anterior:	Includes: Pars anterior Pars media
	<ul style="list-style-type: none"> Larger Kidney-shaped No direct connection with brain Sends a process (pars tuberalis) upwards in front of infundibulum Very vascular
2- Posterior:	From floor of diencephalon Of nerve origin; but: <ul style="list-style-type: none"> Contains no nerve cells and Receives nerve fibres from some nuclei of hypothalamus
3- Middle (pars intermedia):	Fusion of: Posterior part of anterior lobe & Anterior surface of posterior lobe

► The Pituitary Gland

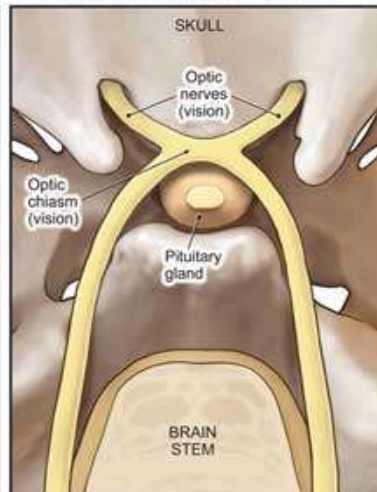


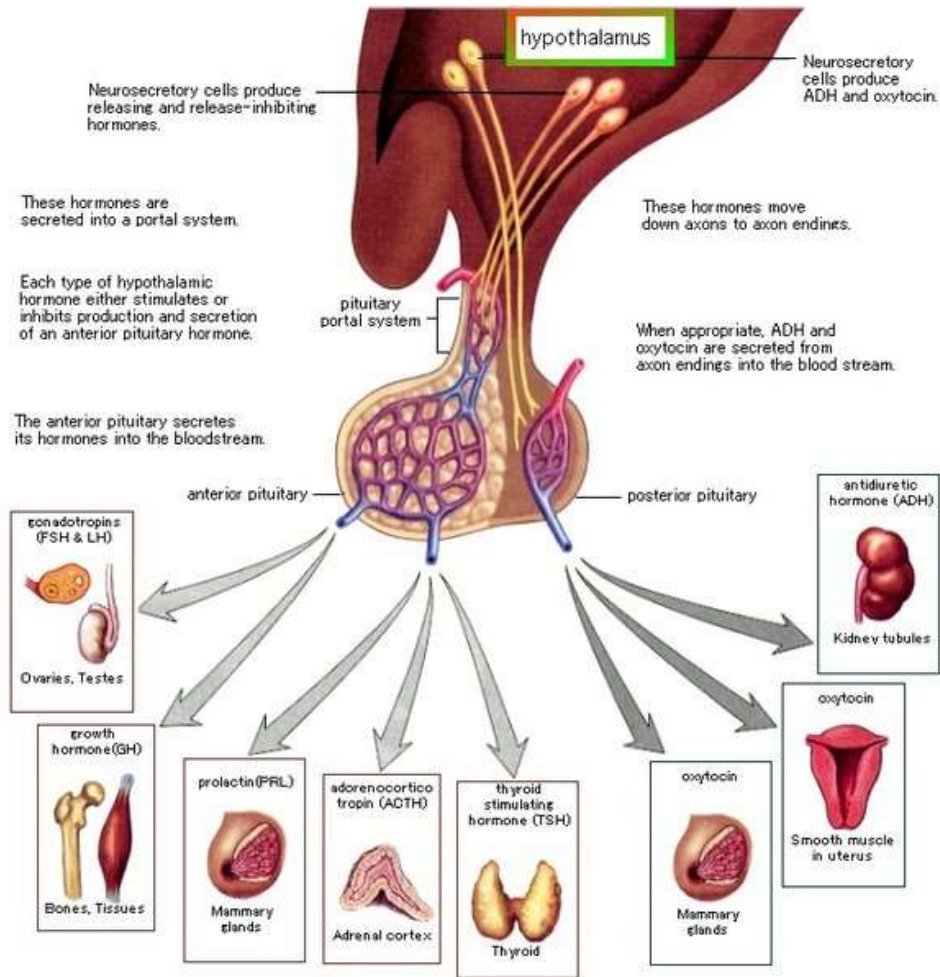
Anatomy Around Pituitary Gland

View of Brain From the Side, at Midline



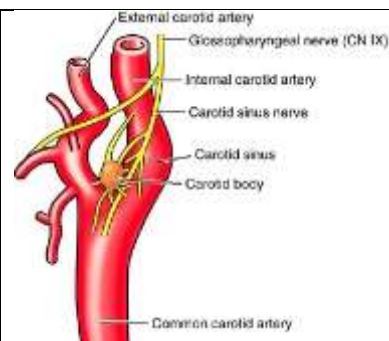
View of Skull Floor From Above



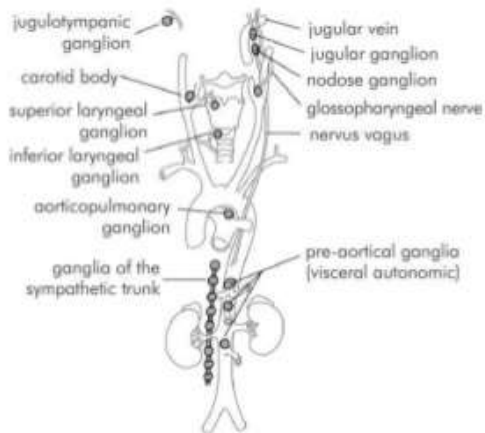
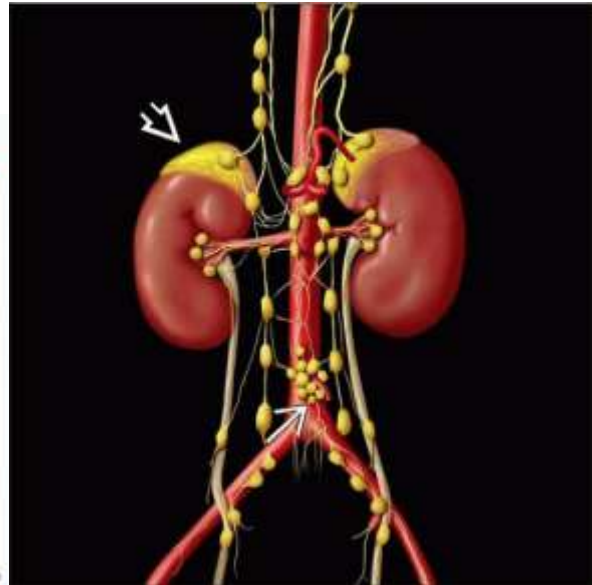
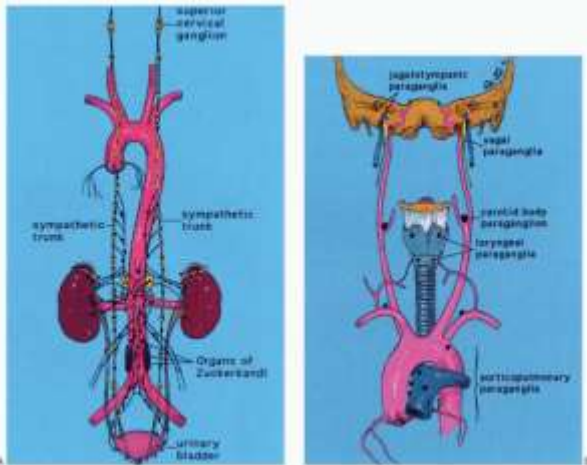


PINEAL BODY				
Weight:	<i>0.1-0.2 g.</i>			
Size:	<i>Small</i> Less than half the size of the pituitary gland			
Diameter:	<i>0.5-1 cm.</i>			
Shape:	<i>Rounded or conical</i>			
Characters:	A reddish body Lies in the groove between the superior pair of corpora quadrigemina Above the posterior extremity of the third ventricle			
In old age :	Shows corpora amylacia (calcareous deposits)			

CAROTID BODY			
A gland-like organ			
Site:	At bifurcation of the carotid artery		
Size:	Minute		
Characters:	Sensory function		



PARAGANGLION			
Size:	Very small		
Site:	Irregular At back of abdomen or lower end of aorta		
Characters:	Glandular bodies (chromophil)		



Introduction

- Nomenclature
 - Glomus tumours,
 - chemodectoma,
 - nonchromaffin tumours,
 - carotid body tumours
- Correct terminology of paraganglionic tissue : by location
 - Carotid body, glomus tympanicum, glomus jugulare