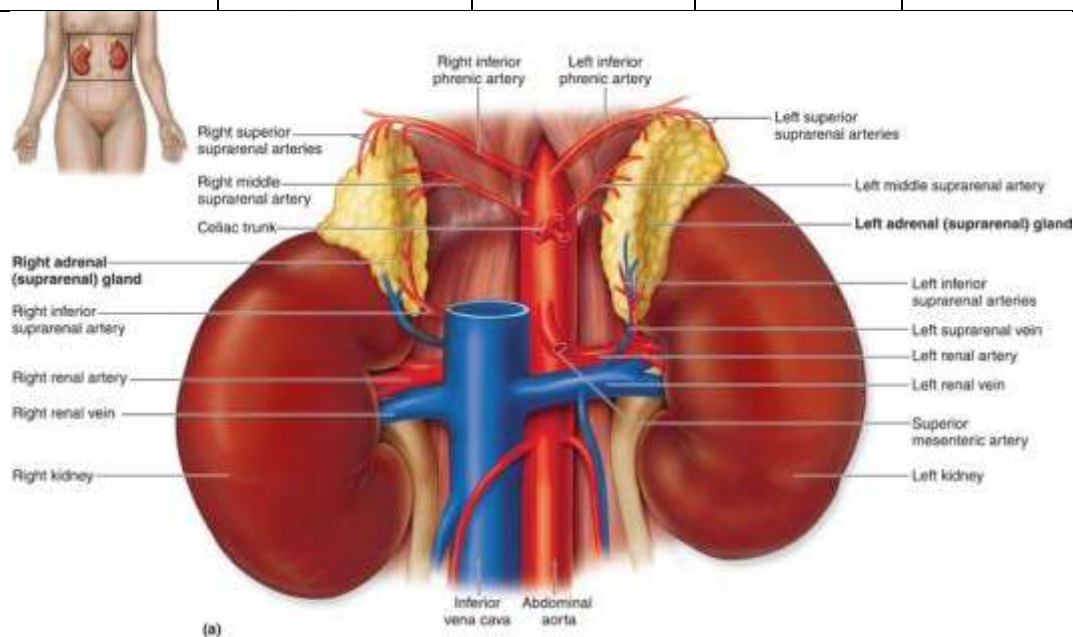


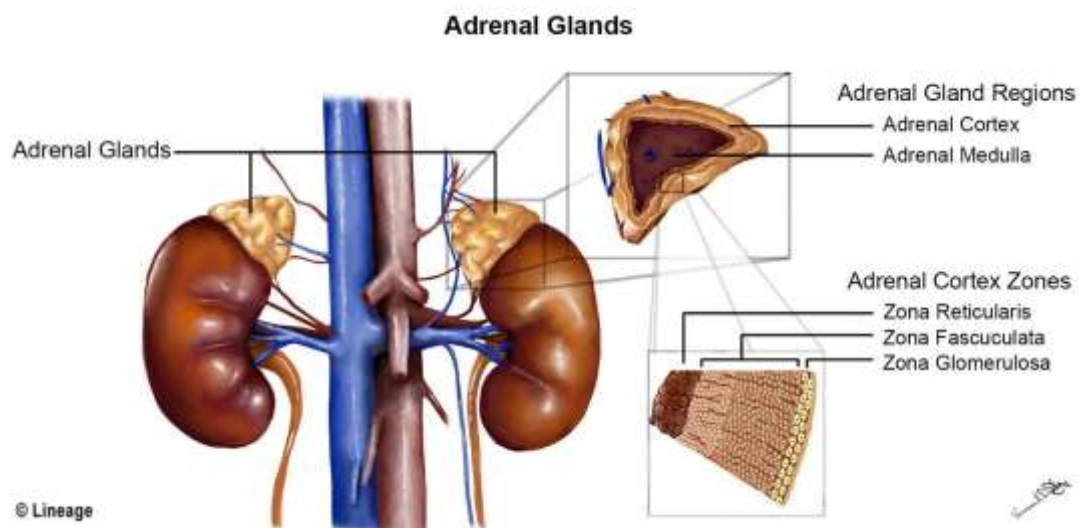
## X. Relevant Normal Features Suprarenal glands

<b>SUPRARENAL GLANDS</b>			
<i>A pair of glands surmounting the medial part of upper end of kidneys (but separated by fat and areolar tissue)</i>			
	<b>Weight:</b>	3—4 g.	
	<b>Height:</b>	3—5 cm.	
	<b>Breadth:</b>	3 cm.	
	<b>Thickness:</b>	0.4-0.6 cm.	
	<b>Size:</b>	Small	
	<b>Consistence:</b>	Soft	
	<b>Shape:</b>	Flattened	
	<b>Colour:</b>	Yellowish-brown	
<b>Surfaces:</b>	Anterior Posterior		
<b>Borders:</b>	Medial: Convex Lateral: Concave		



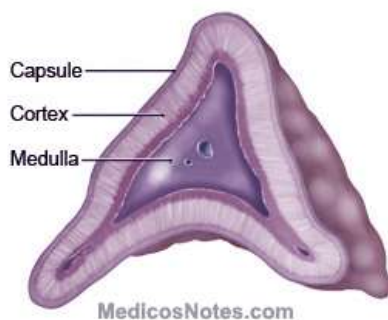
	<b>Right adrenal</b>		<b>Left adrenal</b>	
	<i>Smaller</i>		<i>Larger</i>	
	<i>Pyramidal (Some- what oval)</i>		<i>Crescentic</i>	
	<i>Base downwards</i>		<i>Semilunar:</i> • <i>Upper end: Narrow</i> • <i>Lower end: Round</i>	
<b>Vein and hilum:</b>	<i>Near upper end</i>		<i>Near lower end</i>	

<b>Other features</b>			
<b>Enclosed in a fibrous capsule</b>			
<b>On section:</b>	<b>Cortex:</b>	<ul style="list-style-type: none"> <li>• <b>Outer zone</b></li> <li>• <b>Yellowish</b></li> <li>• <b>Rich in lipoids</b></li> <li>• <b>No chromaffin tissue</b></li> </ul>	
	<b>Medulla:</b>	<ul style="list-style-type: none"> <li>• <b>Inner zone</b></li> <li>• <b>Smaller</b></li> <li>• <b>Reddish-brown or pearly grey</b></li> <li>• <b>Soft</b></li> <li>• <b>Diffluent</b></li> <li>• <b>May appear as a cavity</b></li> <li>• <b>Contains chromaffin tissue</b></li> </ul>	
<b>Accessory suprarenal:</b>			
	<ul style="list-style-type: none"> <li>• <b>Occasionally-present</b></li> <li>• <b>Small</b></li> </ul>		



## Adrenal Gland Cross Sections

Transverse Section



Microscopic Section

