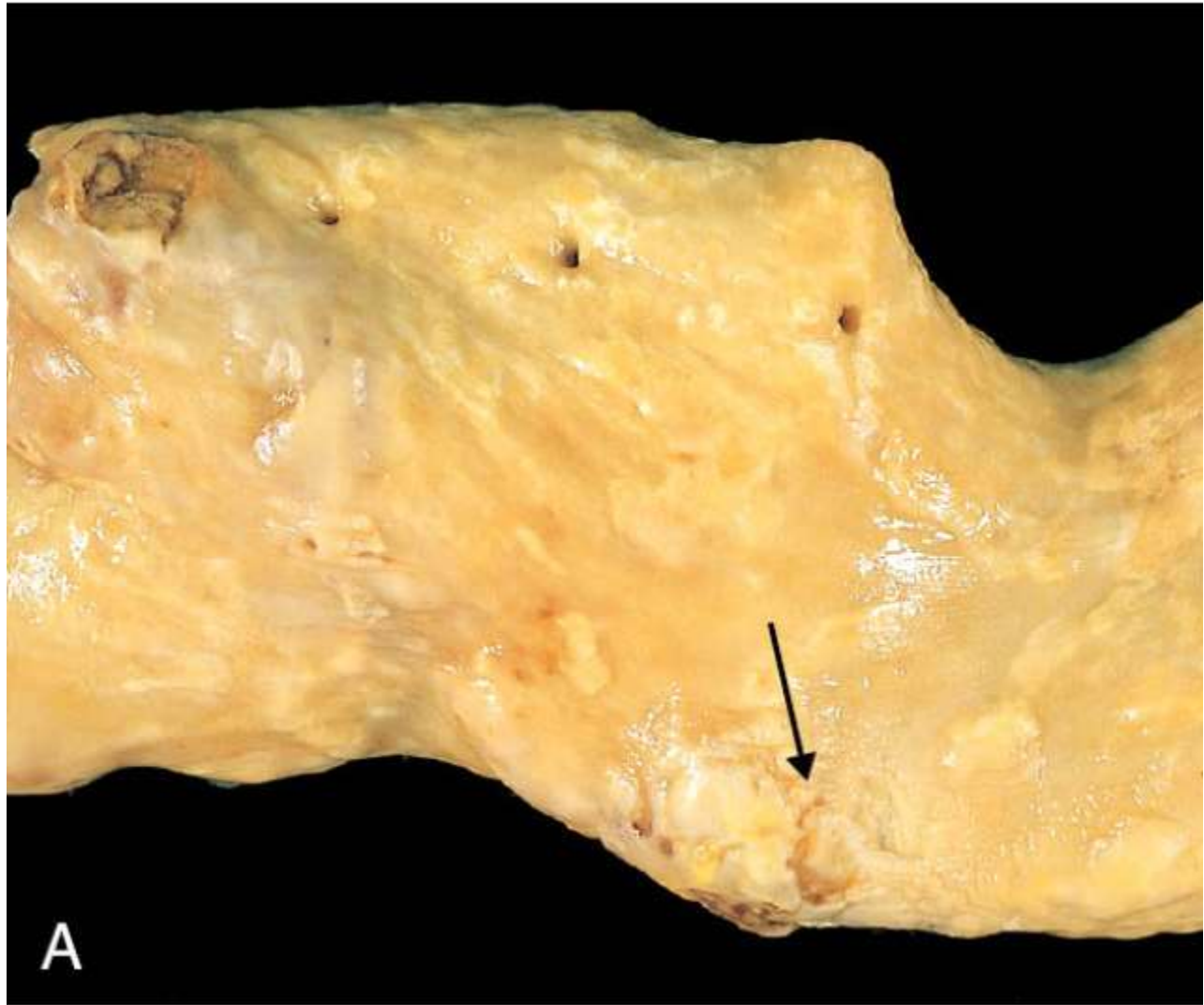


XV. Diseases of the Cardiovascular System
139

2. Collagen diseases:				
	(a) Rheumatic disease. (b) (b) Periarteritis nodosa. (c) Disseminated lupus erythematosus. (d) Diffuse scleroderma. (e) May be: a) Burger's disease (thrombo-angitis obliterans). (f) (f) Rheumatoid arthritis. (g) (g) Dermatomyositis. (h) (h) Serum-sickness.			
3. Degenerative (arteriosclerosis-group):				
	1. Atheroma (atherosclerosis or nodular degeneration of intima) with deposition of lipoid substance in the deepest part of intima. 2. This is common in the elastic arteries (aorta) and the coronaries, cerebrals and some other arteries. 3. Monckeberg's medial degeneration, mostly in medium-sized vessels (muscular type). 4. Hypertension (diffuse hyperplastic sclerosis of intima) occurring in the small vessels (intimate vasculature). 5. It may be primary or secondary .			
4. Vasomotor derangement:				
	(a) Raynaud's syndrome. (b) Achrocyanosis. (c) Erythrocyanosis (d) Erythralgia. (e) Telangiectasis.			
5. Aneurisms				
	(a) Congenital. (b) Acquired: (syphilitic; atherosclerotic; mycotic; in tuberculosis or peptic ulcer). (c) False (Traumatic and dissecting). (d) Arterio-venous (aneurismal varix and varicose aneurism). (e) Cirroid (congenital arterio-venous aneurism or fistula).			
II - Diseases of veins				
1. <i>Inflammatory (phlebitis): Non-suppurative; suppurative.</i> 2. <i>Phlebitis migrans.</i> 3. <i>Phleboscclerosis.</i> 4. <i>Varicose veins</i>				



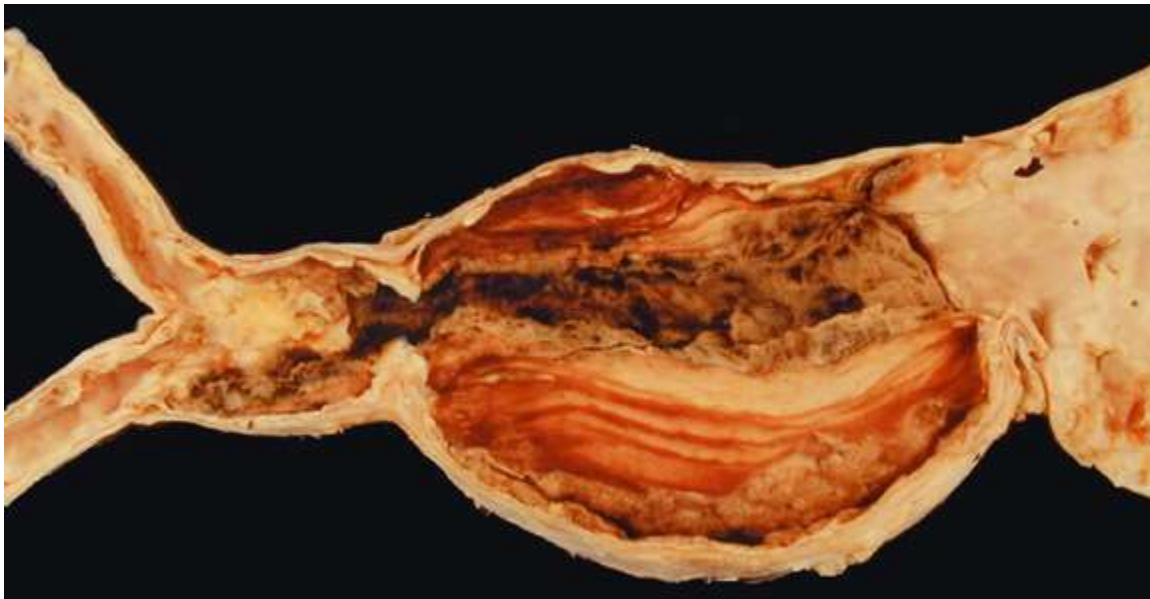
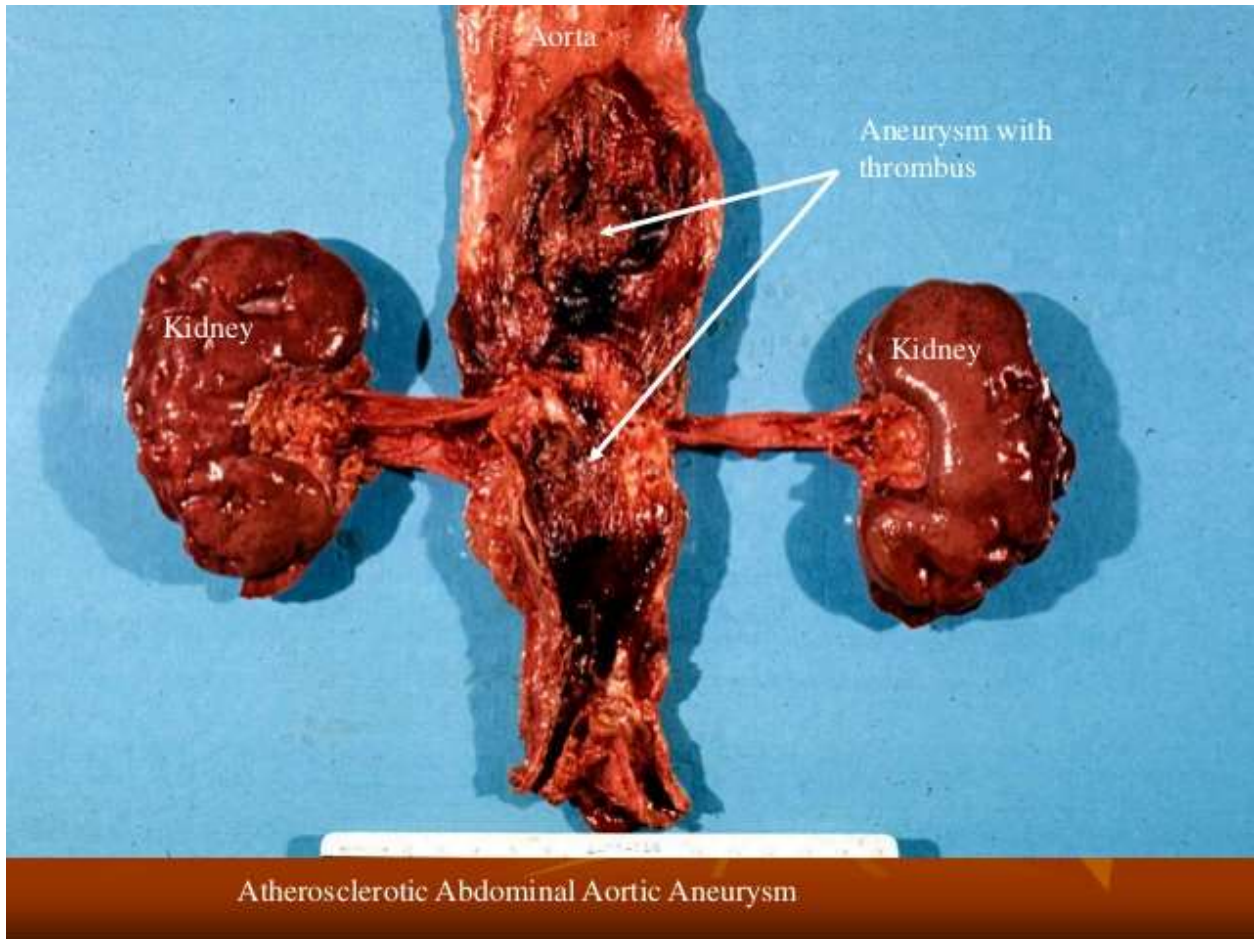
Copyright © 2010 by Saunders, an imprint of Elsevier Inc.

Atherosclerosis		I- 6.123		
<i>Aorta</i>	Is contracted Appears rigid			
	<i>Intima:</i>	Shows elevations Yellow streaks Intimal thickening's Irregular plaques Coalesced patches (2—3 cm.) Some scarring Puckered endothelium		

Plaques:

- Accumulations of **opaque yellow fatty material**
- With a covering layer of **pale white fibrous tissue**
- Some are **dark red and haemorrhagic**
- Some show a greyish-white fibrous tissue
- Few are **ulcerated with superadded thrombosis**
- Occasional **calcified plates**
- Coalesced larger irregular patches
- **Thickened mouths of intercostal vessels**





Aneurysm with thrombus showing the lamellated lines of Zahn

