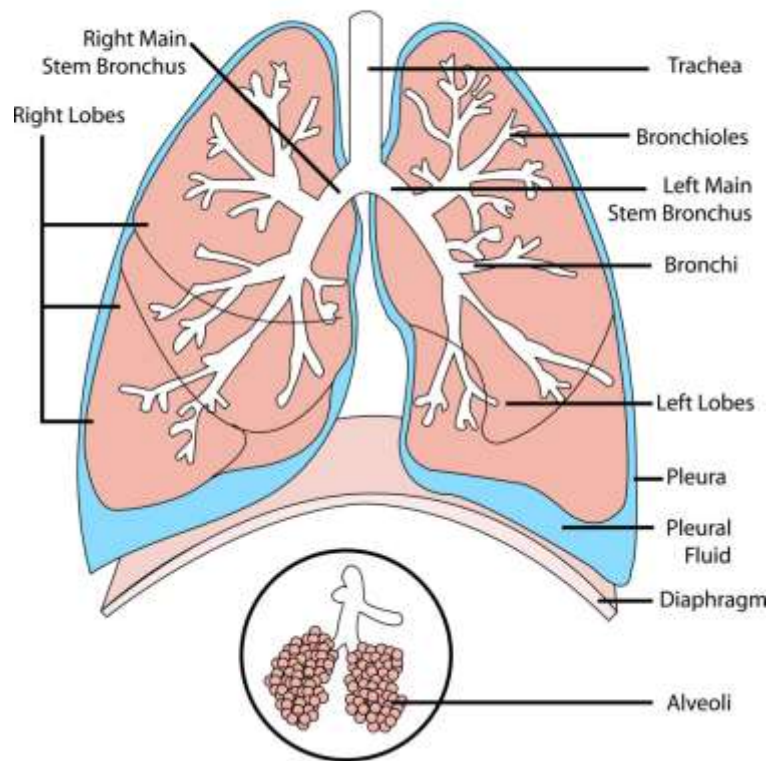


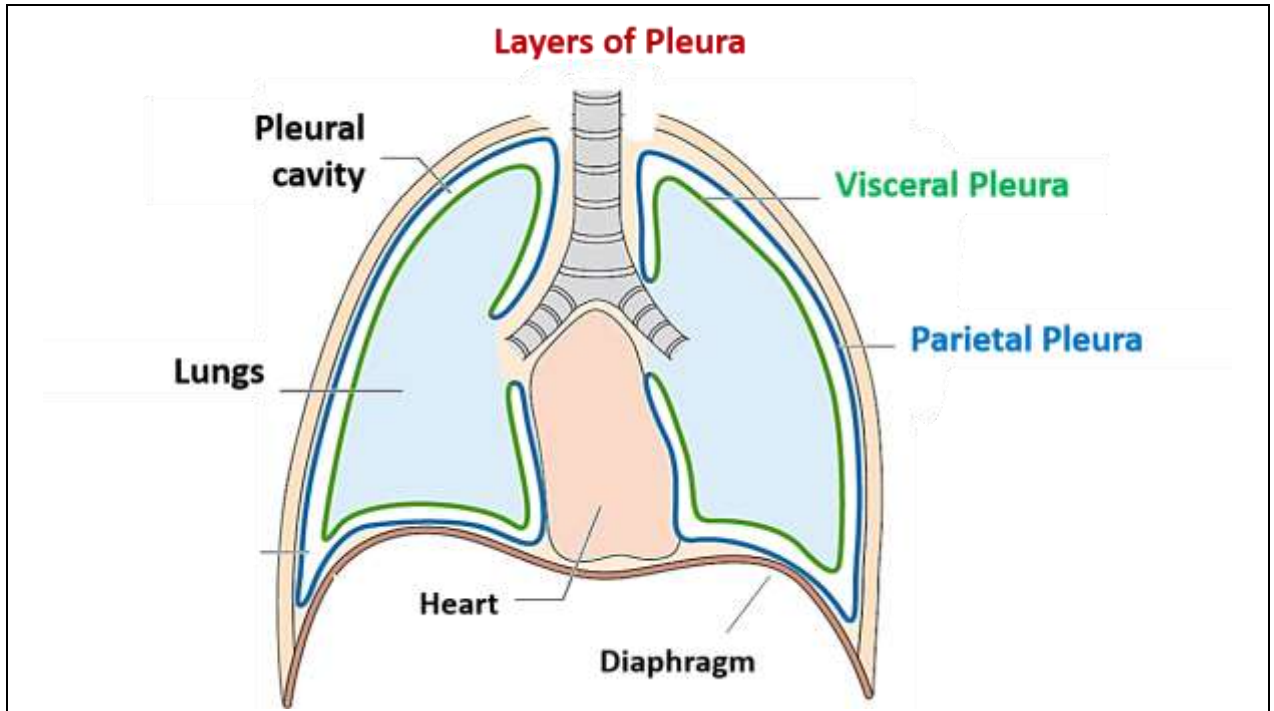
Respiratory system

LARYNX			
<i>Lies</i>	<i>below</i>	<i>Hyoid bone & tongue</i>	
Cartilages	Paired :		
	Arytenoid :	Tip: Elastic cartilage Base: Hyaline cartilage	
	Corniculate: Cuneiform:	Elastic fibrocartilage Elastic cartilage	
	Unpaired :		
	1. Thyroid	Hyaline cartilage and start to ossify after 20 years	
	2. Cricoid		
	3. Epiglottis:	Elastic cartilage	

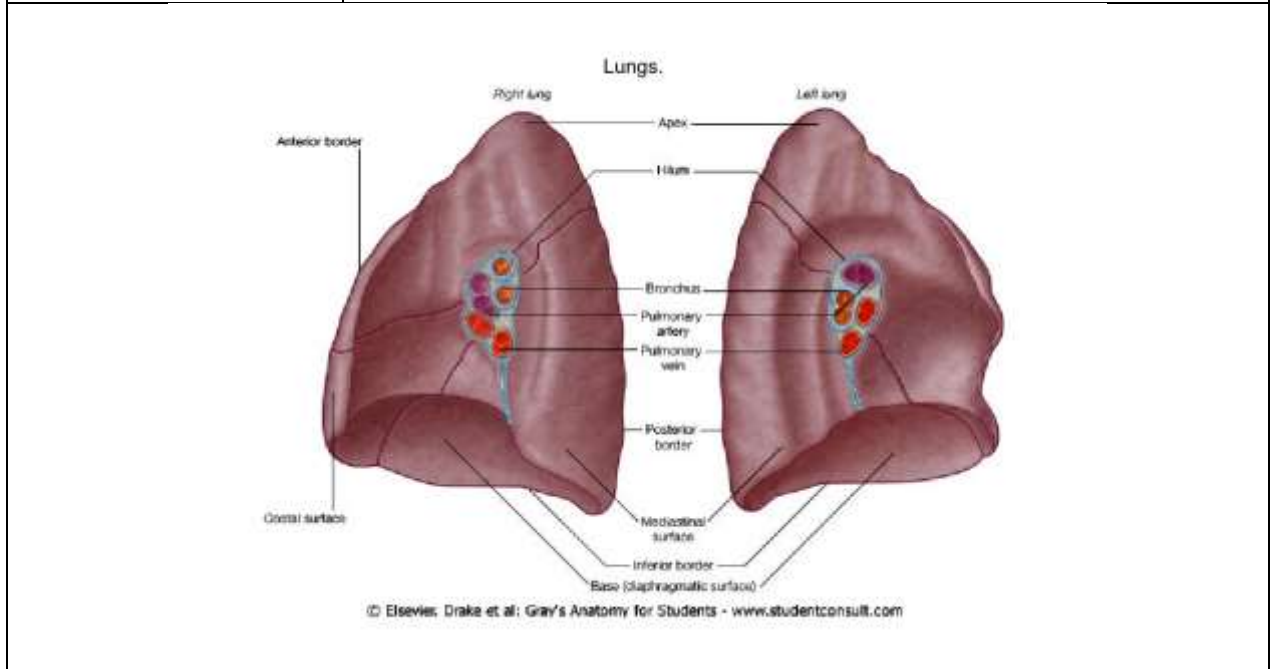
Diagram of the Human Lungs



PLEURA AND LUNG			
PLEURA	<ul style="list-style-type: none"> A closed invaginated sac Of delicate serous membrane Invests lung 		
Layers			

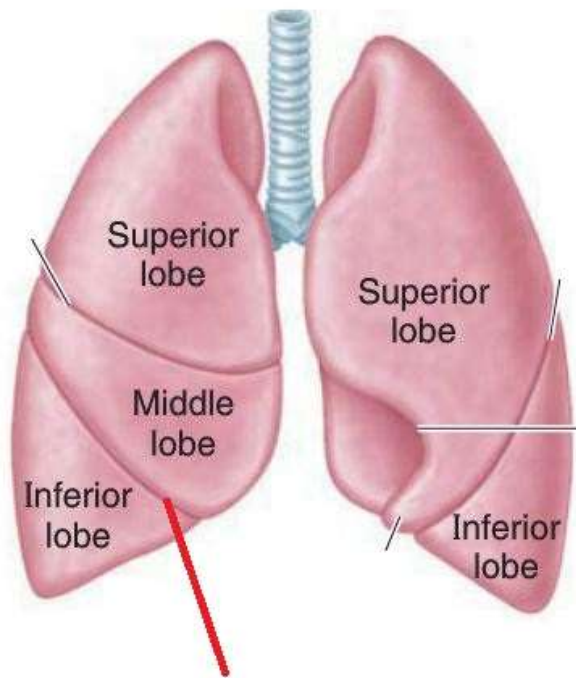


Parietal	Lines:	Inner surface of corresponding half of chest	
	Includes :	<ol style="list-style-type: none"> 1. Intercostal 2. Diaphragmatic 3. Cervical 4. Mediastinal 	
Visceral Covers surface of lung	Lines	fissures between lobes	
	Forms	<ol style="list-style-type: none"> 1. pulmonary 2. pleura 	
Pleural cavity	A potential space between parietal and visceral pleura		
Pleural surface	Smooth Glistening Transparent Moistened by serous fluid		



LUNG	
A spongy porous organ	Soft Elastic Crepitates (when handled) Resembles half a cone

	Weight	Right:	350—570 g. (average is 425)
		Left :	320—520 g. (average is 370)
		Larger and heavier in male than female	
Surfaces	Costal	Smooth Convex Extensive	
	Medial :	1. Anteriorly (mediastinal) : Hollowed out 2. Posteriorly (vertebral)	



(A) Anterior view

Surface :	Smooth Shiny Dark-slate blue Mottled with fine dark intersecting lines (numerous polyhedral patches crossed by lighter lines)		
Borders			
	Anterior :	Short Thin Sharp	
	Posterior :	Rounded Indistinct Dark	
	Inferior :	Thin Sharp Blunt and rounded (medially)	
Apex :	Rounded.		
Base :	Semilunar More concave in right lung		
Special features of lungs			
Right lung :	Lobes	Three :	Upper

			Middle (wedge-shaped) Lower	
	<i>Fissures</i>	<i>Two :</i>	Short Wide	
<i>Left lung</i>	<i>Lobes</i>	<i>Two</i>	Upper (apex & anterior border) Lower (base & back of lung): Bulky	
	<i>Fissure</i>	<i>Single</i>	Oblique Large	
<i>Hilum</i>	Large Wedge-shaped Depressed Surrounded by pleura			
Traversed by: Structures at root of lung :				
		<i>1. Bronchus :</i>	(firm elastic tube)	
		<i>2. Pulmonary artery :</i>	Thick-walled Dorsolateral to bronchus	
		<i>3. Pulmonary veins :</i>	Upper Lower	
		<i>4. Lymph vessels</i>		
		<i>5. Lymph nodes:</i>	(dark)	
		<i>6. Bronchial arteries :</i>	(one - right) (two - left)	
		<i>7. Pulmonary nerve plexus</i>	Anterior Posterior	
These structures are : Enclosed in pleura Bound by areolar tissue dense and fibrous in adults				
General features of lungs				
A healthy fresh portion cut of lung:	Floats in water.			
An inflamed or non-inflated portion:	Sinks			
A healthy lung (after opening thorax):	Shrinks to 1/3 previous bulk			
During childhood, lung is :	Yellowish rose-pink			
Pulmonary pleura:	Covers opposing surfaces of lung lobes Extends into fissures			
<i>The right main stem-bronchus :</i>	More vertical More directly in line with trachea than the left			
<i>Lung-lobes:</i>	Comprise 18 bronchopulmonary segments (morphological)			
<i>Each lung-lobe:</i>	Is divided into 2 or 4 segments			