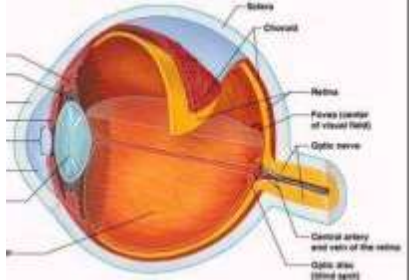
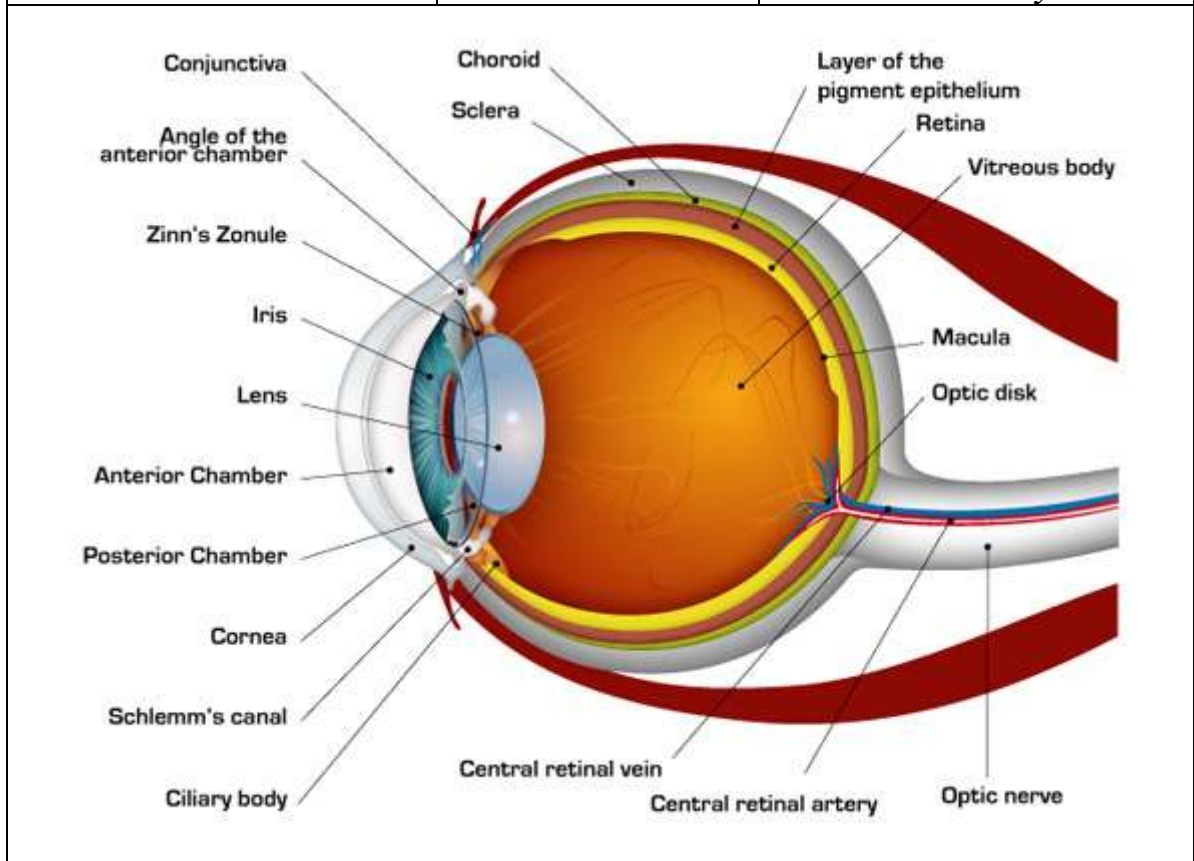
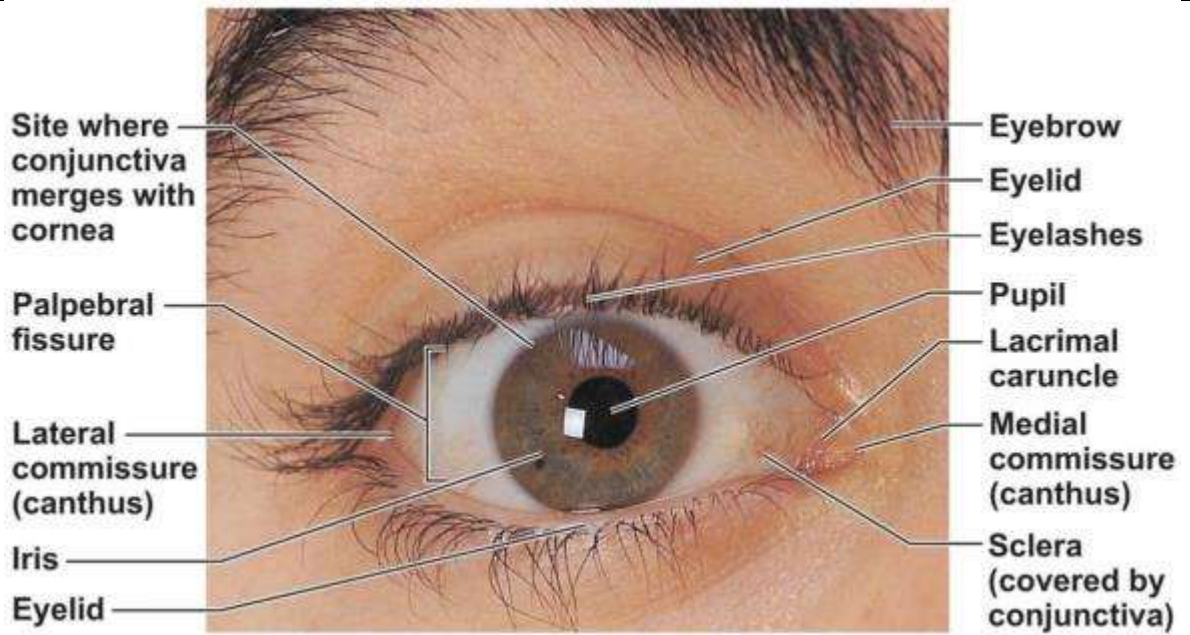


**X. Relevant normal features  
EYE**

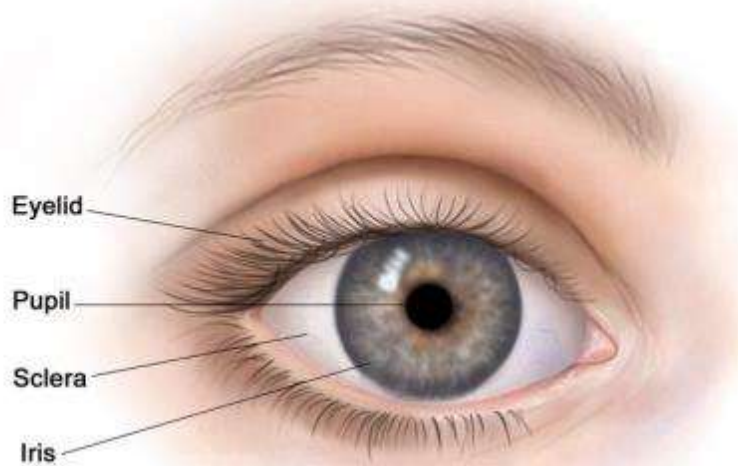
	<b>ORBIT</b>		
<b>(a) EYE</b>	<i>In anterior part of orbit Spherical</i>		
	<b>Diameter:</b>	<i>2-2.5 cm.</i>	
	<b>Layers (coats):</b>	<b>1. Fibrous :</b>	<b>Outer :</b> <i>Sclera &amp; Cornea</i>
		<b>2. Vascular:</b>	<b>Middle:</b> <i>Choroid Ciliary body Iris</i>
		<b>3. Nervous:</b>	<b>Inner :</b> <i>Retina</i>
		<b>Refractory media:</b>	<ul style="list-style-type: none"> <li>• <i>Cornea</i></li> <li>• <i>Aqueous humor</i></li> <li>• <i>Lens</i></li> <li>• <i>Vitreous body</i></li> </ul>



**(b) EYE-LIDS**



	<i>Folds in front of eye:</i>		<i>Two Thin</i>	
	<i>Upper lid</i>		<i>Lower lid</i>	
	<ul style="list-style-type: none"> <li>• Skin</li> <li>• Fascia</li> <li>• Muscle</li> <li>• -----</li> <li>• Conjunctiva</li> </ul>		<ul style="list-style-type: none"> <li>• Skin</li> <li>• Fascia</li> <li>• Muscle</li> <li>• Tendon</li> <li>• Conjunctiva</li> </ul>	
	<i>Also:</i>	<ul style="list-style-type: none"> <li>• Ligaments</li> <li>• Tarsal glands</li> <li>• Ciliary glands</li> <li>• Vessels (arteries and veins)</li> <li>• Nerves</li> </ul>		



## ACCESSORY LACRIMAL GLANDS

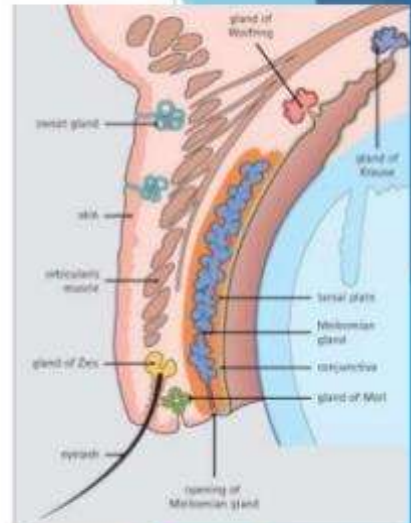
### 1. Glands of Krause

- lying beneath the palpebral conjunctiva between fornix and edge of tarsus.
- about 42 in the upper fornix and 6-8 in the lower fornix.

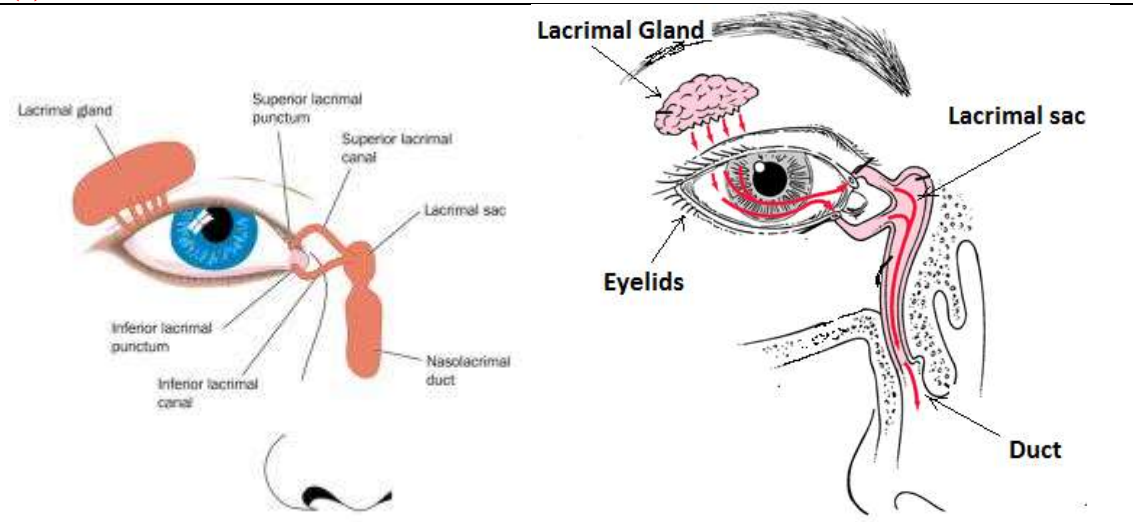
### 2. Glands of Wolfring

- present near the upper border of the superior tarsal plate and the lower border of inferior tarsus.

All lacrimal glands – serous acini similar to salivary glands



## (c) LACRYMAL GLAND

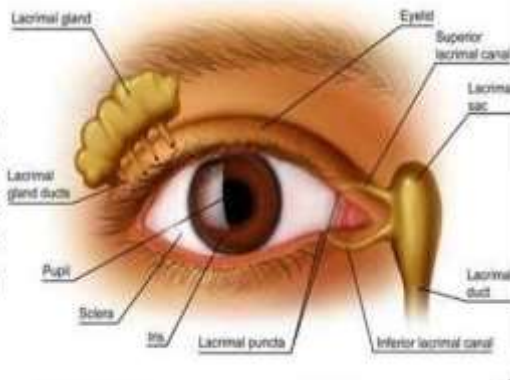


*In close contact with roof of orbit*

**Size :** *Bean-like*

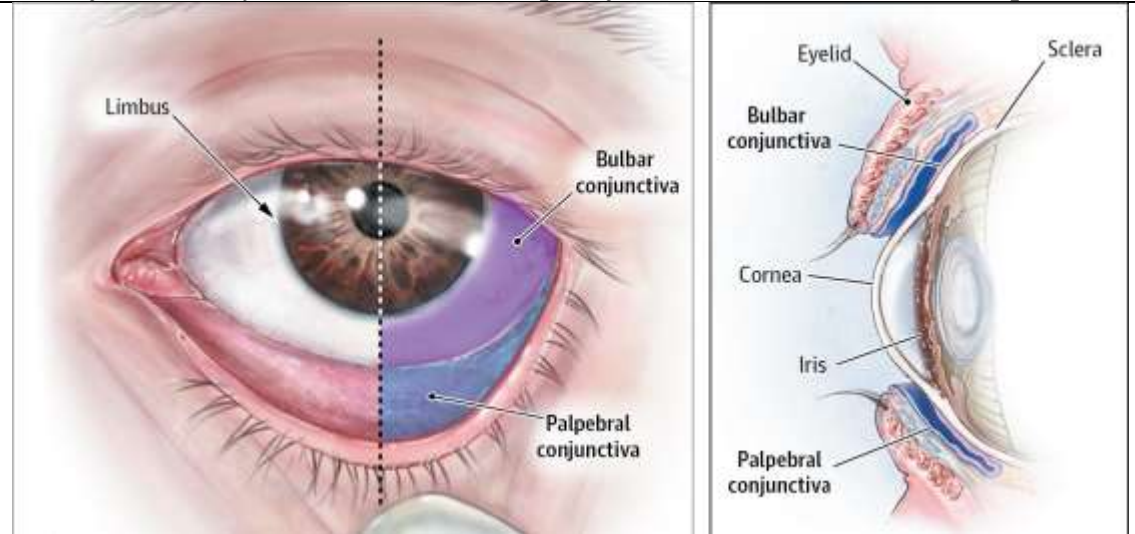
**Shape :** *Almond-like*

1. Lacrimal gland
2. Lacrimal ducts
3. Conjunctival sac
4. Lacrimal puncta
5. Lacrimal canalic
6. Lacrimal sac an
7. Naso lacrimal d



**(d) CONJUNCTIVA**

- *Mucous membrane covering anterior part of sclera and cornea*
- *Reflected on eye-lids to line their deep surfaces to make it moist & Transparent*



**AURICLE**

*A thin plate*

*Thicker and stronger after middle age  
Elastic fibro-cartilage (except lobule)  
Covered with skin  
Oval*

**Presents:**

**Eminences**

**Depressions Composed of:**

1. *Concha*
2. *External auditory meatus*
3. *Helix*
4. *Lobules: Lower Soft*
5. *Tragus: Hairy*

