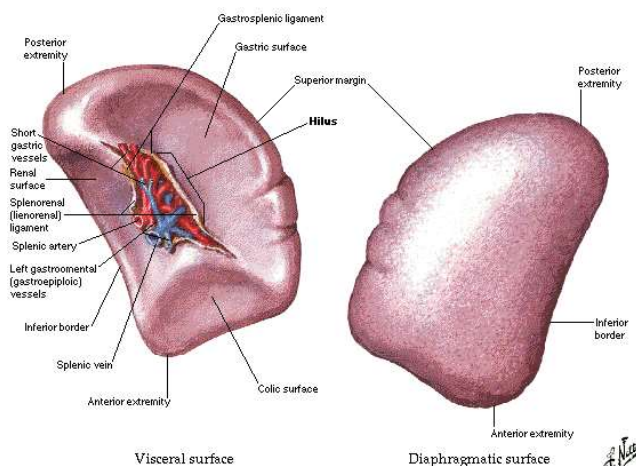


X. Relevant Normal Features
Spleen and lymph nodes

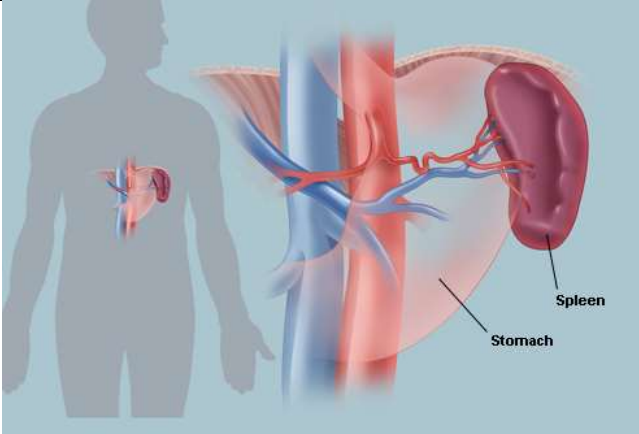
Spleen

Visceral and Diaphragmatic Surfaces



SPLEEN				
<i>Lies in uppermost part of left side of abdomen</i>				
Weight:	150-200 g.			
Shape:	<i>Oblong (or slightly oval)</i> <i>Flattened</i>			
Size:	<i>As left lobe of liver</i>			
<i>Diminishes, in size and weight, at old age</i>				
	Length:	12 cm.		
	Breadth:	7 cm.		
	Thickness:	3.5 cm.		
External surface:	<i>Smooth</i> <i>Covered by strong fibro-elastic tissue (peritoneal coat)</i>			
Capsule:	<i>Covers spleen (except at hilum)</i> <i>Slate-grey Smooth</i> <i>Glistening</i>			
Cut surface:	1. Trabeculae:	<i>Fibromuscular strands enclosing splenic pulp</i>		
	2. Red pulp:	<ul style="list-style-type: none"> • <i>Soft</i> • <i>Dark reddish-brown</i> <i>(represents the venous sinuses and the intervening tissue or pulp spaces)</i> 		
	3. White pulp:	<i>Scattered Malpighian bodies (lymphatic nodules):</i> <i>Pale specks</i> <i>Just visible to naked-eye (0.25-1 mm.)</i> <i>Whitish semi-opaque dots</i>		
Colour:	<i>Dark-purplish (bluish-red)</i>			

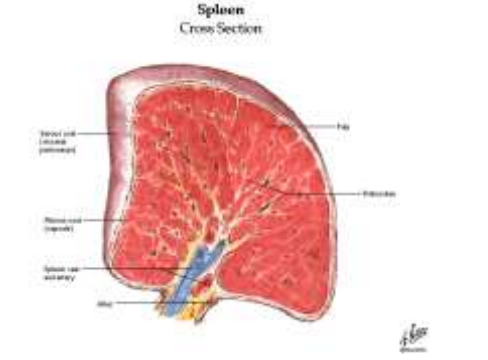
	<i>Highly vascular</i>		
Consistence:	<i>Soft</i> <i>Friable</i>		

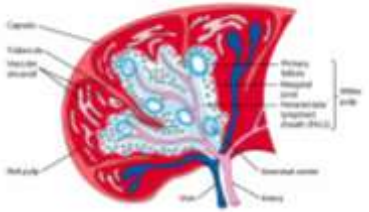


Other features

Surfaces:	Diaphragmatic:	<i>Convex</i> <i>Smooth</i>	
Visceral:	<i>Shallow impressions</i>		
Borders:	Upper (superior):	<i>Sharper</i> <i>Notched</i> <i>Convex</i>	
	Lower:	<i>Blunt</i> <i>More rounded</i>	
Ends:	Medial:	<i>Blunt</i> <i>Rounded</i>	
	Lateral:	<i>More expanded</i> <i>Notched</i> <i>Angled</i>	
Hilum:	A fissure:	Transmits:	<i>Artery</i> <i>Vein</i> <i>Nerves</i> <i>Lymph vessels</i>

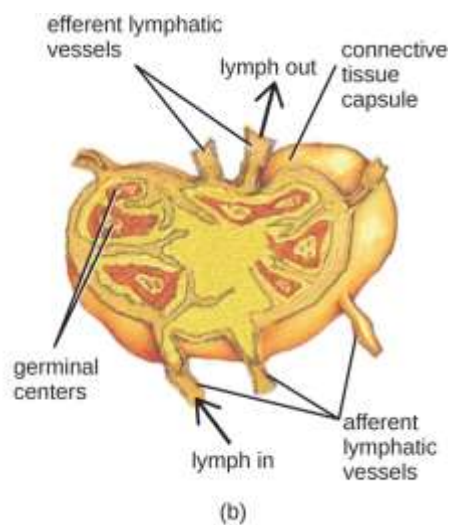
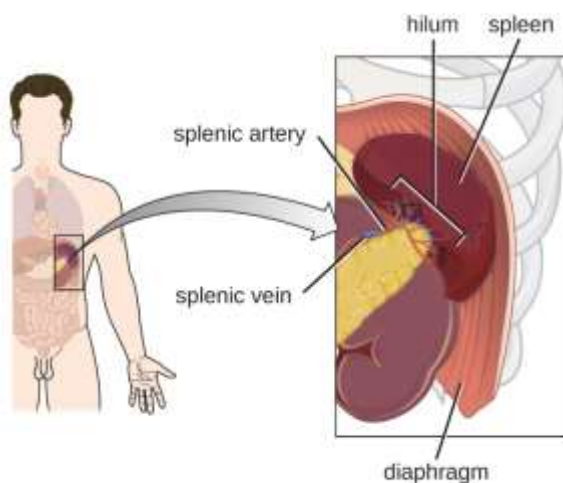
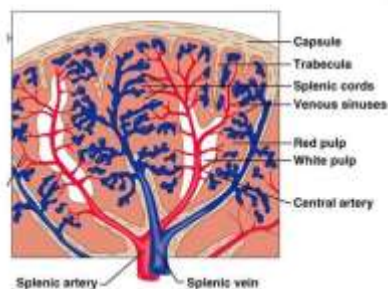
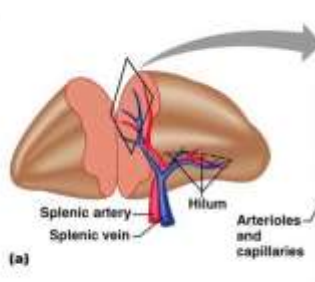
Attachments:	<i>Leino-renal ligament</i> <i>Gastro-splenic ligament</i>
---------------------	---------------------------------------------------------------



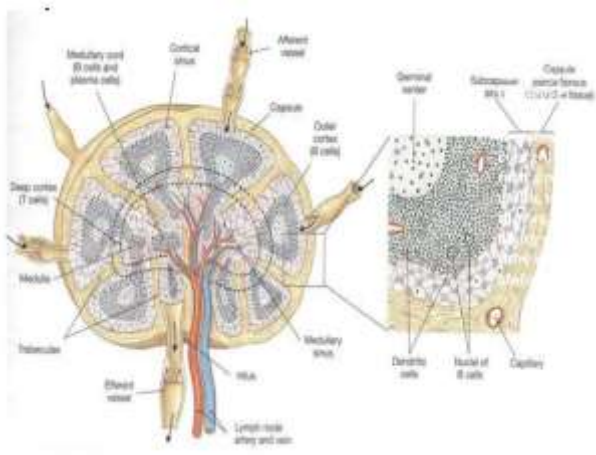
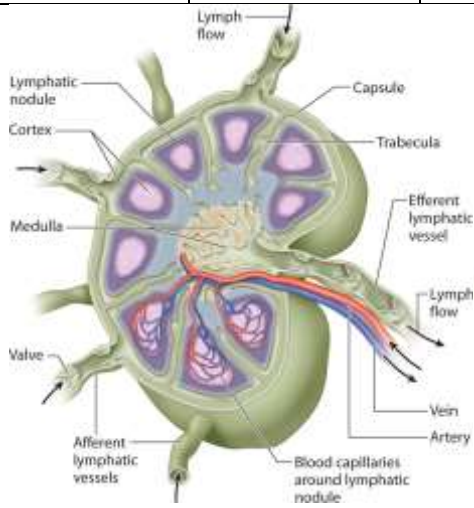
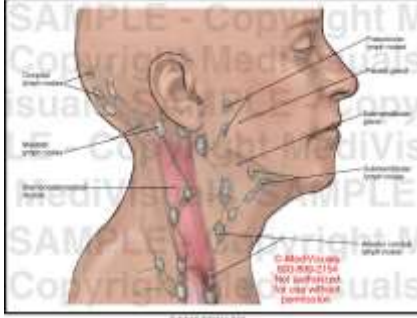
<p><i>Accessory spleen:</i></p>	<p><i>Occasional one or two In gastro-splenic ligament</i></p>	<p style="text-align: center;">Spleen</p> 

Spleen

- White pulp
 - B and T cells carry out immune function.
- Red pulp
 - Removes aged and defective RBCs
 - Stores breakdown products of RBCs
- Erythrocyte production in fetus
- Stores blood platelets
- Has regenerative properties



LYMPH NODES			
Shape:	<i>Oval</i> <i>Bean-shaped</i>		
Size:	<i>Small</i>	<i>Long diameter: 0.5-1.5 cm.</i> <i>Short diameter: 0.2-0.4 cm.</i>	<i>1.0 cm</i> <i>0.3 cm</i>
Consistence:	<i>Soft.</i>		
Capsule:	<i>Well-defined</i> <i>Of connective tissue</i>		
External surface:	<i>Smooth</i> <i>Convex</i>		
Cut surface:	<i>Greyish-white</i> <i>Largely made up of lymphoid tissue</i>		
Divisions:			
1. Cortical zone:	<i>Superficial Of lymphoid nodules:</i>		
	<ul style="list-style-type: none"> • <i>Large</i> • <i>Rounded</i> • <i>Does not form a complete investment for the medullary portion; deficient at the hilum</i> 		
2. Medullary zone:	<i>Deeper</i> <i>At the hilum, it reaches the surface</i>		
The hilum:	<i>A depression</i> <i>At one side</i>		
	<i>Along it:</i>	<i>Pass the blood vessels of the node</i> <i>Emerge the efferent lymphatics</i>	



General Distribution of Lymphatic Collecting Vessels and Regional Lymph Nodes

