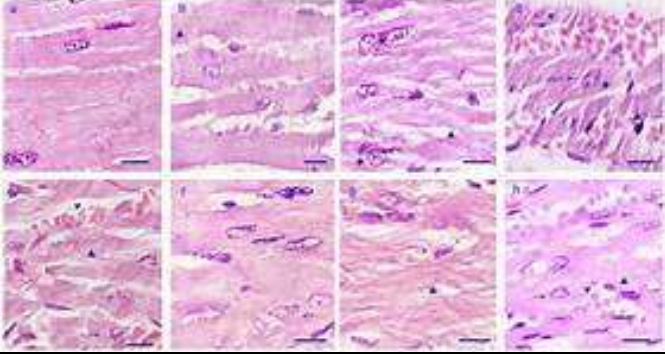

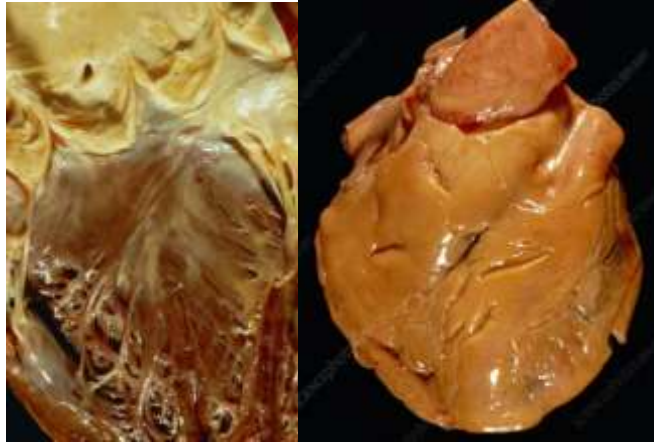


## XV. Diseases of the Cardiovascular System

<b>1 - Albuminous Degeneration (cloudy swelling)</b>				
	<i>Heart</i>	<i>Size</i>	Slightly increased	
		<i>Shape :</i>	Globular Swollen	
		<i>Appearance :</i>	Opaque	
	<i>Myocardium</i>	<i>Colour:</i>	Pale opaque brownish-red	
		<i>Consistence:</i>	Softer than normal:	
	<i>Ventricles</i>		Dilated (slightly)	
<b>N.B. This patient died of pneumonia, fever and a toxic state.</b>				
				
<b>2- Fatty Degeneration I-2.121</b>				
	<i>Heart</i>	<i>Size:</i>	<ul style="list-style-type: none"> <li>• Slightly enlarged</li> </ul>	
		<i>Shape:</i>	<ul style="list-style-type: none"> <li>• Globular</li> </ul>	
		<i>Chambers:</i>	<ul style="list-style-type: none"> <li>• Dilated</li> </ul>	
	<i>Myocardium</i>	<i>Appearance:</i>	<ul style="list-style-type: none"> <li>• Opaque</li> </ul>	
		<i>Colour:</i>	<ul style="list-style-type: none"> <li>• Brownish-yellow</li> </ul>	
		<i>Consistence:</i>	<ul style="list-style-type: none"> <li>• Soft</li> <li>• Greasy</li> </ul>	
	<i>Papillary muscles</i>	Show opaque yellow streaks		
	<i>Subendocardium</i>	Mottled Irregular yellow streaks	<b>Tabby cat heart (Thrush-breast picture).</b>	
<b>N.B.:</b>				
Such a <b>patchy type of fatty degeneration</b> may be caused by severe anaemias. The appearances of the heart suggested such terms as; <b>Tabby cat heart (thrush-breast picture).</b>				



**Fatty Degeneration (patchy). Fatty Degeneration (diffuse)**  
*Specimen No 1-2.121 Specimen No. 1-2.121a*

<b>b. Fatty Degeneration</b>		<b>1- 2 .121a</b>		
	<b>Heart:</b>	<ul style="list-style-type: none"> <li>Slightly enlarged</li> <li>Pale yellow</li> </ul>		
	<b>Subepicardial fat:</b>	<ul style="list-style-type: none"> <li><b>Very pale</b></li> <li>Rather normal in amount (not increased)</li> </ul>		

**N.B.:**

Such a diffuse type of fatty degeneration may be caused by

- Infection,**
  - Toxaemia or**
  - Very severe anaemias.**
- Occasionally, when the myocardial degeneration is advanced, it may result in **mild heart failure,**



<b>3. Fatty Infiltration</b>		<b>T-2.122</b>			
	<b>Heart</b>	<b>Size:</b>	Is increased		
		<b>Surface fat:</b>	Increased		
		<b>Cut surface:</b>	Subepicardial fat	is increased	<b>0.5- 1 cm</b>
	<b>Myocardium</b>	<ul style="list-style-type: none"> <li>Of almost natural appearance</li> <li>With interstitial fatty streaks</li> <li>Covered by excess subepicardial fat</li> </ul>			
	<b>The fat</b>	<ul style="list-style-type: none"> <li>Forms a thick layer</li> <li>Is marked on wall of right ventricle</li> <li>Extends in between cardiac muscle fibres</li> <li>Appears as <b>pale yellow streaks, dots and patches</b></li> <li>Few streaks <b>appear from underneath endocardium</b></li> <li>Interstitial infiltration is <b>marked at the apex</b></li> </ul>			

**N.B.:**

- The picture suggested the term "**tigroid heart**".
- Few cases of myocardial failure are occasionally attributed to marked fatty infiltration of the heart.