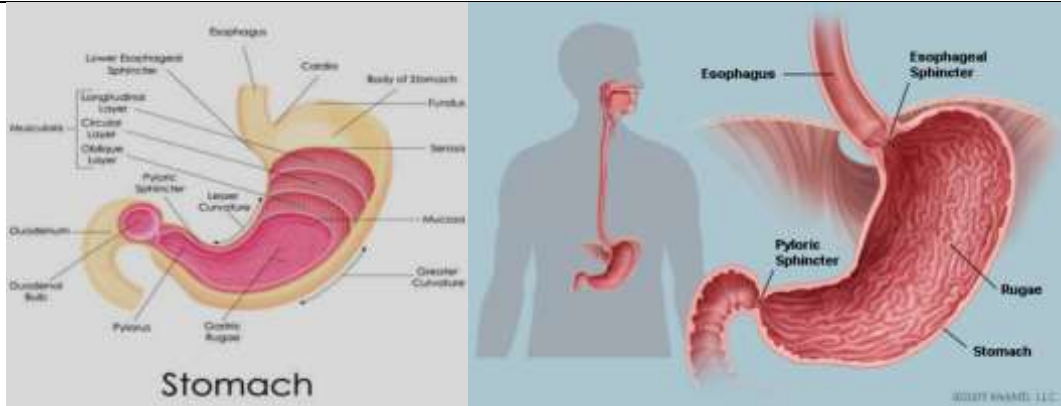
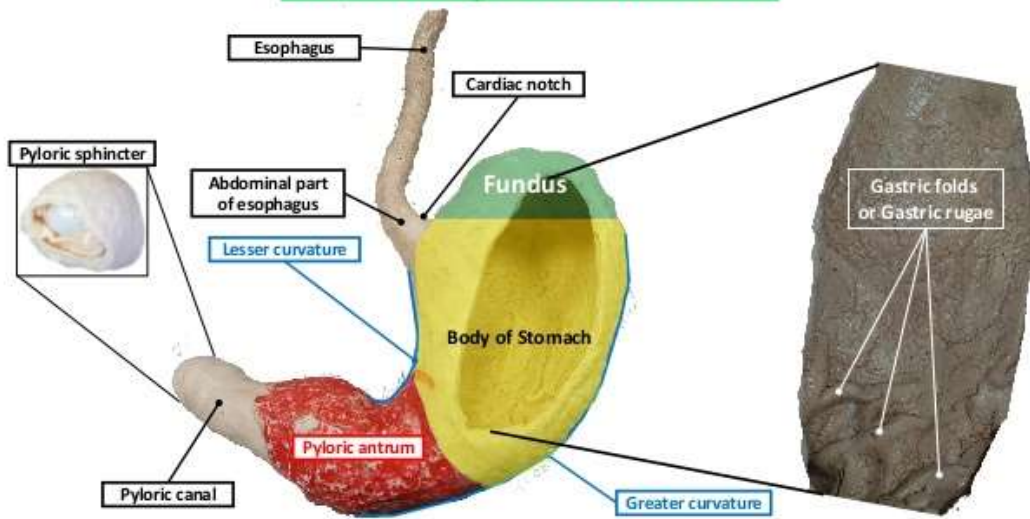


5- Gastrointestinal tract - Stomach



STOMACH			
The most dilated part of alimentary tract			
Weight :	125—175 grams		
Size :	Variable Length 25—30 cm.	(from top of fundus to lowest part of greater curvature; when moderately filled)	
Thickness of wall :	0.6 cm.		
Shape	Variable	Curved on itself	
Axis :	J - shaped		
Outline:	Pear-shaped		
Blunt end:	Above and to left		
Openings :	Cardiac orifice (upper end) Pyloric orifice (lower end)		
Surfaces	Anterior (Antero-superior)	Completely closed with peritoneum Convex	
	Posterior (Postero-inferior)	Incompletely-clothed with peritoneum Not so convex	
Borders	Upper (lesser curvature)	Concave Shows an angular notch	
	Lower (greater curvature)	Convex	

Anatomy of Stomach



Special features

Fundus	Uppermost bulbous expansion Rounded Above level of oesophageal junction			
Cardiac part	Just adjoining cardiac orifice			
Body.	Main part between fundic and pyloric segments			
Pyloric antrum	Dilatation at lower border of stomach			
Pyloric canal	Immediate 2–3 cm. of stomach before pylorus			
Pylorus	Terminal 1 cm.	<i>Thick-walled</i>		
Pyloric sphincter	Ring of muscle Thick	Bulges mucous membrane inwards a rounded knob into duodenum		
Mucosa of stomach	Soft Thick Fairly smooth Velvety (in distended stomach) With rugae and folds (in empty contracted stomach) Honey-combed (appearance of gastric glands and orifices of gland-tubes)			
Folds	Longitudinal in direction	(parallel to lesser curvature)		
	Marked at:	Pyloric end Greater curvature		
Surface:	Thin (specially at cardia) Brownish-red & Thick (at pyloric end) Pinkish (at pyloric end)			

