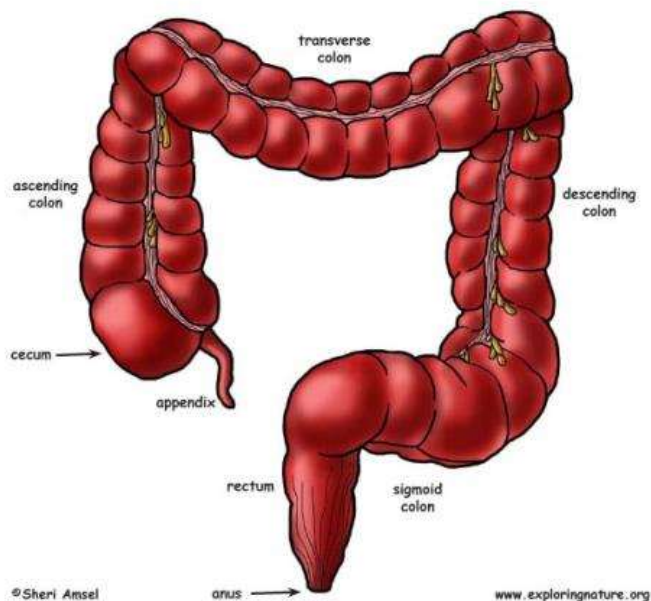
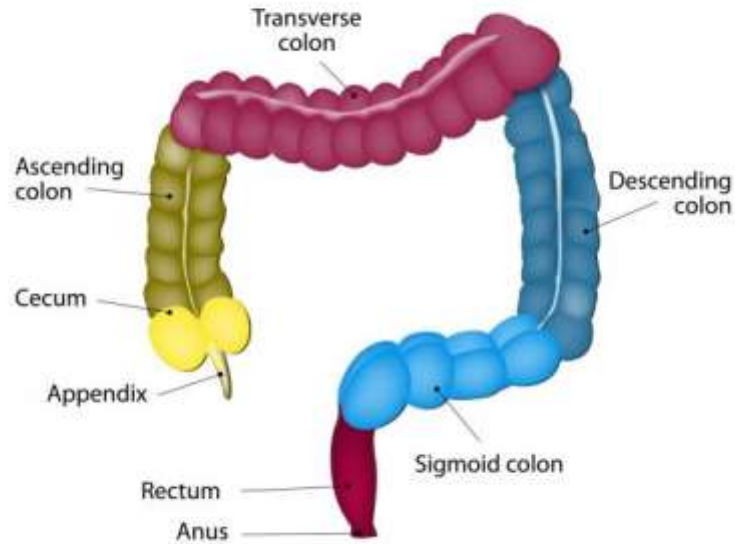


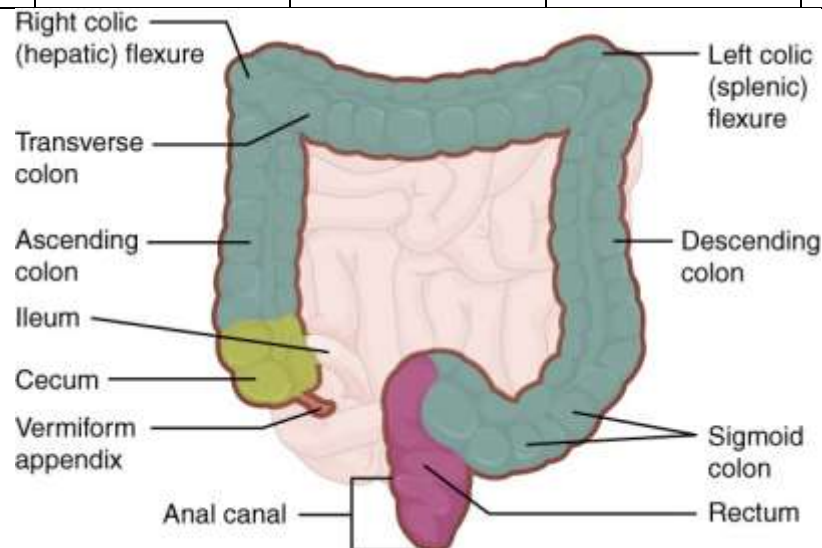
Gastrointestinal tract- large intestine				
LARGE INTESTINE				
General Features Of Large Intestine (compared with small intestine)				
	<i>From end of ileum to anus</i>			
Length:	<i>160—190 cm. (average is 170 cm.)</i>			
Diameter:	<i>Variable</i>			
	Widest at:	<i>Beginning (caecum)</i>		
1. Greater:				
2. More fixed in position				
3. Taenia coli:	<i>(3 longitudinal muscle bands) :</i>		<i>Subserosal</i>	
4. Puckered and Sacculated:	<i>(haustrations)</i>			
5. Appendices epiploicae :	<i>Present</i>	<i>except in:</i>	<i>Caecum Vermiform appendix Rectum</i>	
6. Serous coats:	<i>Absent at:</i>			
	<i>Lower 1/3 of rectum & Anal canal</i>			
7. Mucosa :	<i>Solitary lymphatic nodules :</i>	<i>Present</i>		
	<i>Aggregated nodules :</i>	<i>Absent</i>		
	<i>Villi</i>	<i>Absent</i>		



ANATOMY OF THE LARGE INTESTINE



(a) CAECUM	<i>Sacculated pouch</i> <i>Large</i> <i>Asymmetrical</i> <i>Blind lower end</i>			
Length:	6 cm.			
Breadth:	7.5 cm.			
Attached to:	<i>Ileum</i> <i>Vermiform appendix</i>			
Closed with:	<i>Peritoneum</i>			



(b) COLON				
Divisions:	<i>1. Ascending</i> <i>2. Transverse</i> <i>3. Descending</i> <i>4. Pelvic</i>			

1. Ascending colon (+ a right flexure)			
Length:	<i>13—20 cm. (average is 15)</i>		
Peritoneum:	<i>Clothes its front and sides</i>		
2. Transverse colon (+ a left flexure)			
Length:	45—55 cm. (average is 50)		
	Diminishes in width distally		
	Enclosed in peritoneum almost wholly:	Greater omentum Transverse mesocolon	
Left flexure:	Sharper than right		
3. Descending colon			
Length	<i>23—30 cm. (average is 25)</i>		
Diameter	Narrower than small intestine		
Lumen:	Usually empty and contracted (at autopsy or operation)		
Surface	Peritoneum covers its front and sides		
4. Pelvic colon			
Length:	<i>15-55 cm. (average is 40)</i>		
Has got:	<i>A complete peritoneal covering</i>		
Mesocolon:	<i>Present</i>		
Begins at:	<i>Pelvic brim</i>		
Includes:	<i>Sigmoid flexures</i>		

Anatomy of the Large Intestine

