
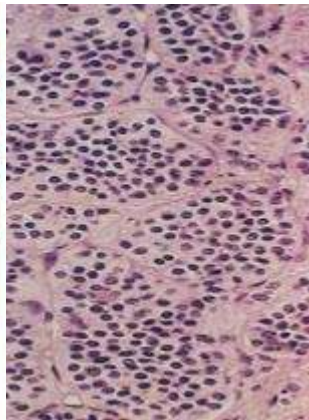
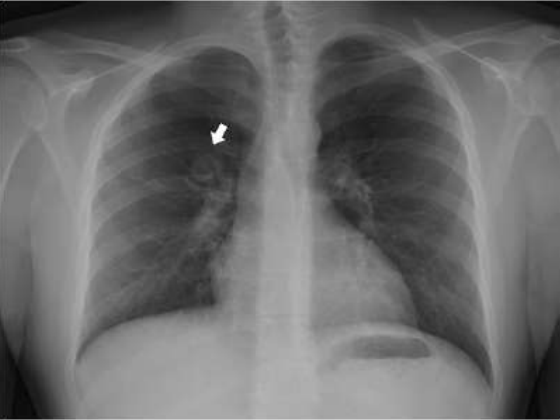


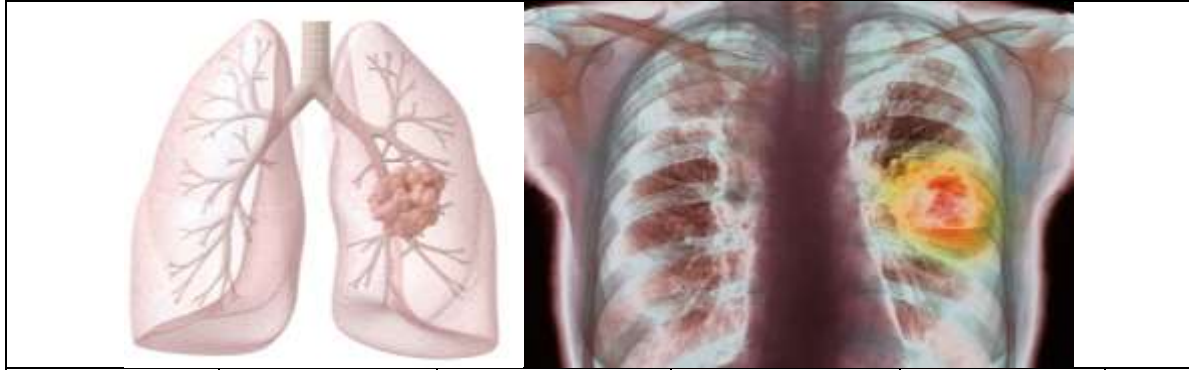


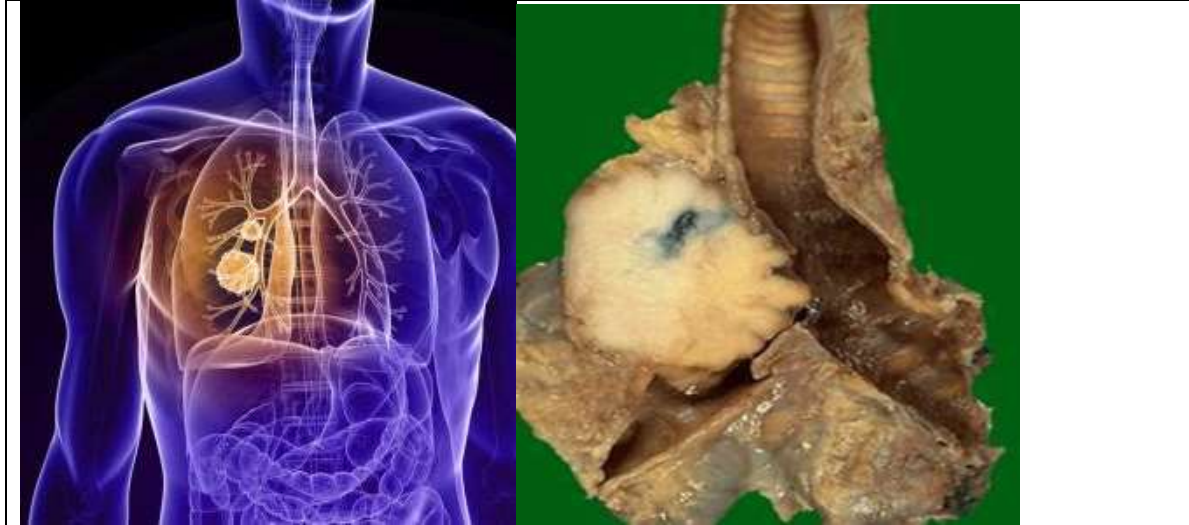
XVI. Diseases of the Respiratory System

187

Adenoma		
Lung	<ul style="list-style-type: none"> • Is about normal in size (or slightly enlarged) • Shows wrinkled areas: <ul style="list-style-type: none"> ○ Bluish-grey ○ Depressed • Collapsed areas (around a mass) • Shows an (adenomatous mass) 	
	The mass	<ul style="list-style-type: none"> • Lies near a bronchus • Is small in size • Rounded in shape • Homogeneous • Ulcerating in areas • Red in colour • Fleshy in consistence
Bronchus	<ul style="list-style-type: none"> • Shows an intraluminal projection or a swelling 	
N.B.:		
<ul style="list-style-type: none"> • Bronchial adenoma, although benign, but it is not strictly innocent. • This tumour may become invasive and may show malignant characters. 		
		
		



Carcinoma II-6.551				
Lung	Shows foci of	<ul style="list-style-type: none"> • Bronchiectasis • Abscess formation • Fibrosis • Is infiltrated by a tumour 		
	The tumour	<ul style="list-style-type: none"> • Is invading the lung and bronchial wall (malignancy) • Large • Pale greyish-white 		
		With areas of	<ul style="list-style-type: none"> • Haemorrhage (dark red) • Necrosis (pale dirty yellow) • Suppuration (whitish — yellow) 	
Bronchus	Is firm in consistence			
	Wall:	Ulcerated Invaded by the tumour tissue		
	Lumen:	Is narrowed		
Pleura	<ul style="list-style-type: none"> • Pale greyish-white • Shows fibrous tissue adhesions 			
Lymph nodes (hilar)	<ul style="list-style-type: none"> • Enlarged • Slightly infiltrated by the tumour tissue. 			
N.B.:				
<ul style="list-style-type: none"> • <i>Histologically, it proved to be a squamous cell carcinoma.</i> 				



Bronchogenic Carcinoma		II-6.551
Lung:	<ul style="list-style-type: none"> • Is enlarged Shows a tumour	
	The tumour	<ul style="list-style-type: none"> • At the upper part of the lung • Invading upper and middle lobes (malignancy) • Forms a large mass • Greyish-white • Dark red areas (haemorrhage) • Dirty yellow areas (necrosis) • Firm in consistence
Bronchus	<ul style="list-style-type: none"> • Ensheathed in the neoplastic tissue • Bronchiectatic Shows retention of secretion	
Lymph nodes (bronchial):	<ul style="list-style-type: none"> • Enlarged • Invaded 	
<p>The image is a composite of four histological sections on the left and a gross specimen of a lung on the right. The histological sections show various features of bronchogenic carcinoma, including glandular structures, cellular atypia, and invasion of surrounding tissue. The gross specimen shows a large, white, necrotic mass in the upper part of the lung, consistent with the description of a large mass with necrosis and hemorrhage.</p>		

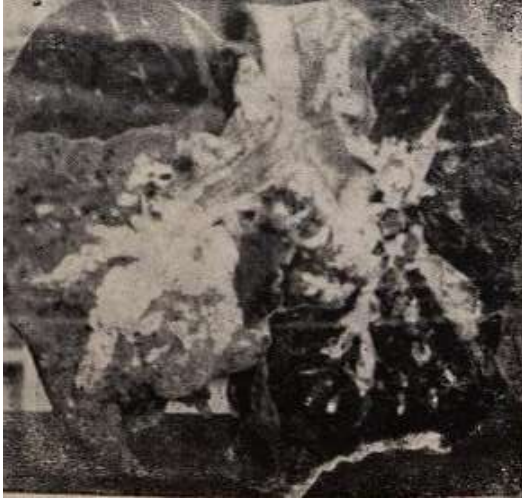


Figure 89

Nature

Carcinoma
(epidermoid; lung)

**Specimen No. II-6.551 Reference P.
187**



Figure 90

Nature

Bronchogenic Carcinoma

**Specimen No. II-6.551
Reference P. 187**