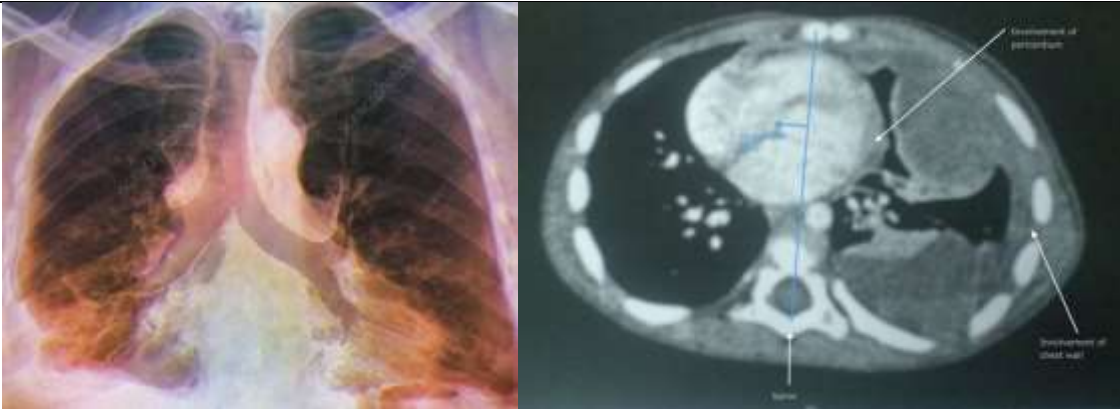


XVI. Diseases of the Respiratory System
189



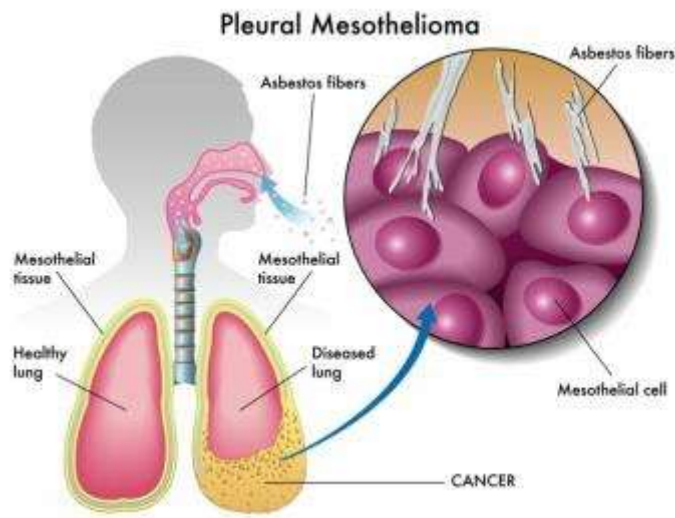
Sarcoma of the lung

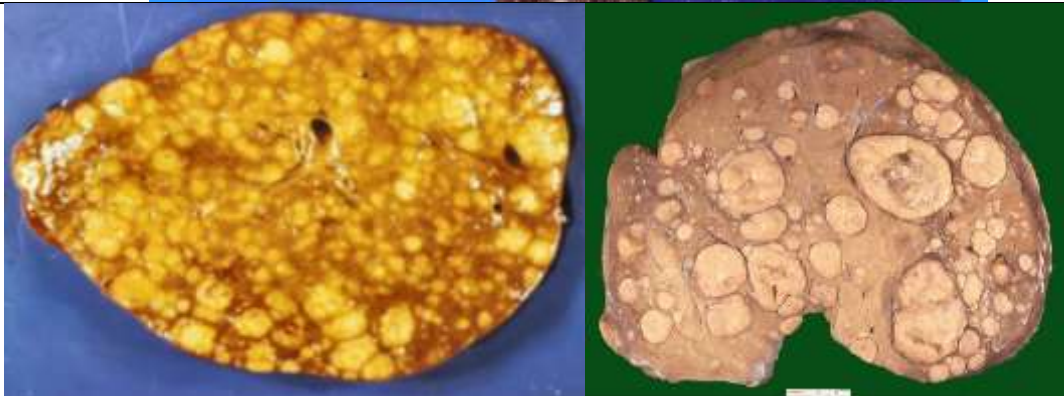
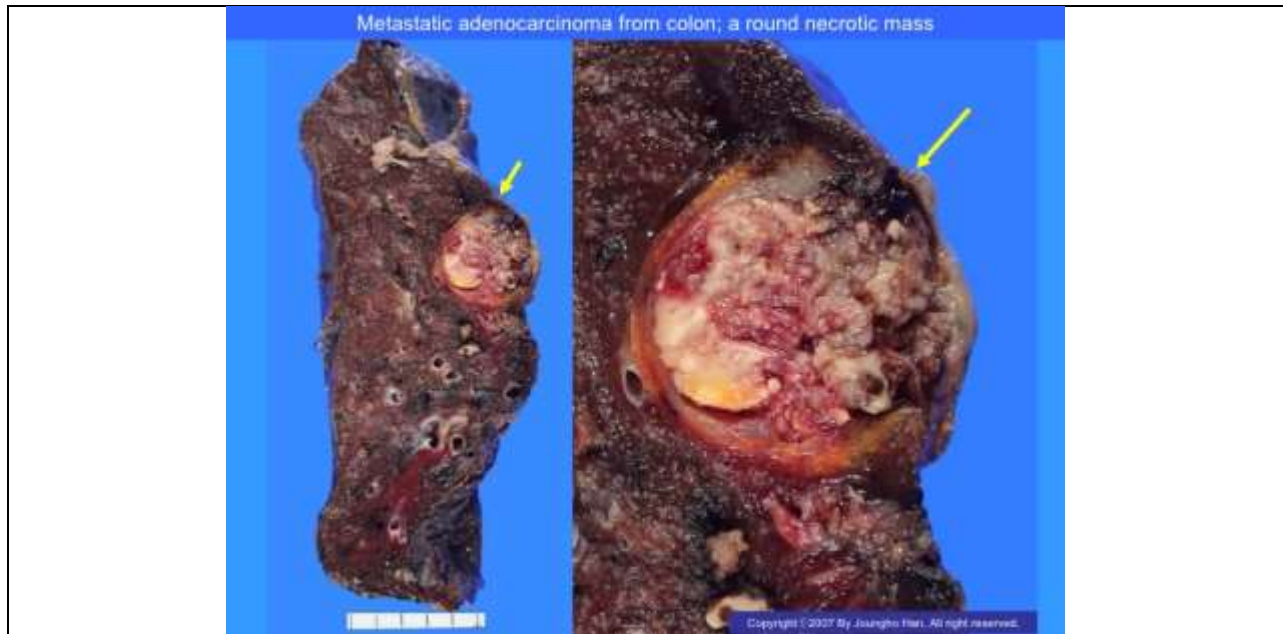
Lung:	Shows a sarcomatous mass infiltrating it (malignancy)	
	The mass:	<ul style="list-style-type: none"> • Large • Homogeneous • Opaque white • Shows foci of: <ul style="list-style-type: none"> ○ Haemorrhage ○ Necrosis • Is fleshy • Infiltrating the lung tissue • No particular relation to the bronchi.

N.B.:
Histologically, it proved to be a sarcoma. It is a rare tumour in the lung.



Kaposi sarcoma

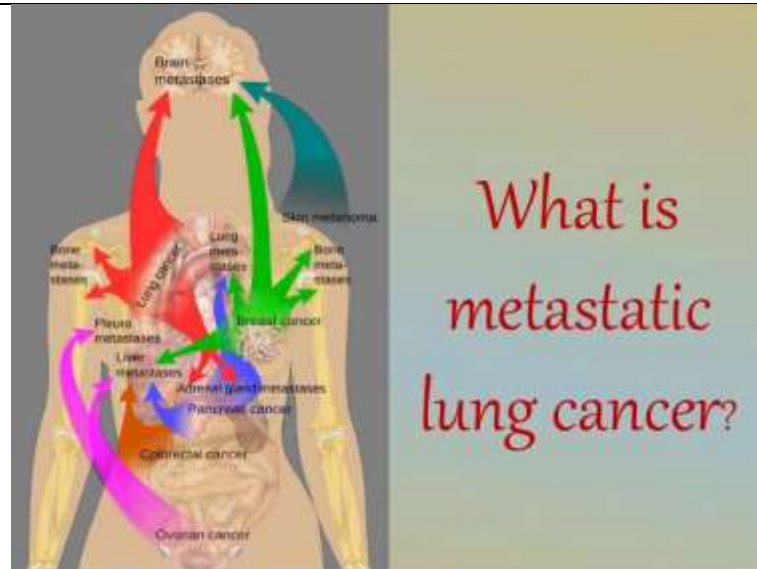




Metastatic Tumours (secondaries)		II-6.502		
Lung	Is enlarged <i>Shows nodular masses on the cut-and-external surfaces</i>			
Nodular masses:	<ul style="list-style-type: none"> • Scattered foci of tumour tissue • Numerous • Variable in size (1–3 cm. in diameter) • Mostly rounded • Well-circumscribed but non-capsulated • With an area of compressed lung tissue around each • Are mainly subpleural • Opaque pinkish-white • Firm in consistence 			
Bronchi	Show no infiltration			
Lymph nodes (hilar):	Are slightly enlarged			
N.B.:				
<ul style="list-style-type: none"> • Metastatic tumours in the lung are common. 				

The primary tumour may be :

1. Sarcoma (in general) and sarcoma of bone and subcutaneous tissue (in particular).
2. Malignant melanoma.
3. Chorioncarcinoma.
4. Hypernephroma --> cannon-ball appearance by X-ray (**clear-cut outline**).
5. Carcinoma of the breast - > masses in the peribronchial lymphatics.
6. Carcinoma of pancreas ---> minute nodules under the pleura.
7. Carcinoma of thyroid gland.
8. Embryonal adenosarcoma of the kidney (**Wilm's tumour**).
9. Carcinoma of the stomach, of colon, or of various other organs.



What is metastatic lung cancer?

Metastases				
Lung	<ul style="list-style-type: none"> • Is enlarged • Shows nodules on the external and cut surfaces 			
	Nodules	<ul style="list-style-type: none"> • Masses of tumour tissue. • Numerous • Uniform in size (with little variations) • Spherical (rounded) • Well-defined • Opaque whitish-pink • Firm in consistence 		
Lymph nodes (hilar)	Show no particular gross change			
N.B.	<ul style="list-style-type: none"> • The lung belongs to a child who died of Embryoma of the kidney (Wilm's tumour). • Metastases are usually: Multiple, discrete, rounded and nodular. 			

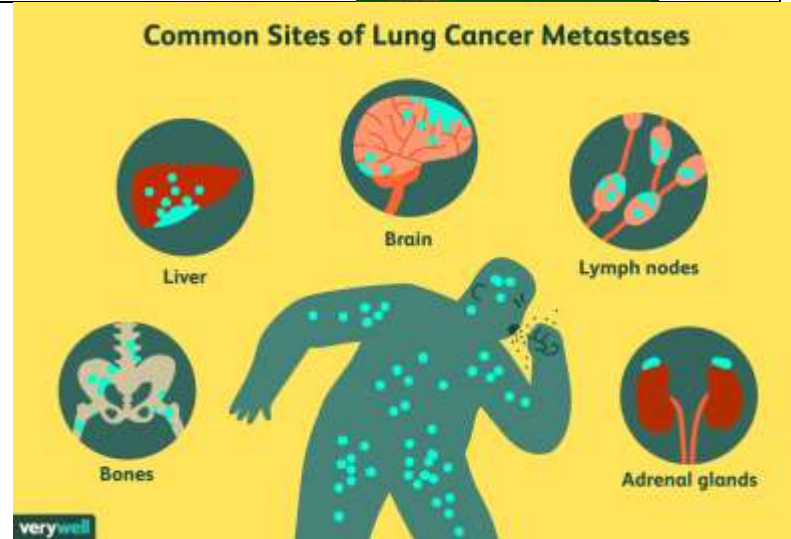


Figure 92

Nature

Metastatic Tumours (lung)

Specimen No. II-6.502

Reference P. 189

- N.B. The lung belongs to a child who died of Embryoma of the kidney (Wilm's tumour).

Metastases are usually :

- Multiple,
- Discrete,
- Rounded and
- Nodular.

