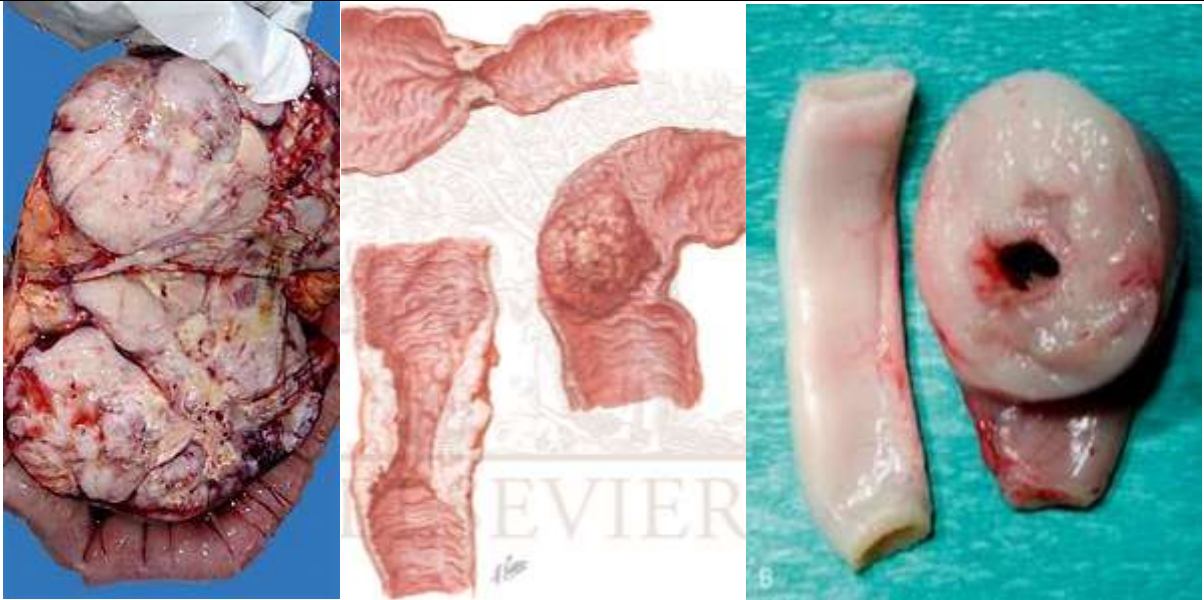
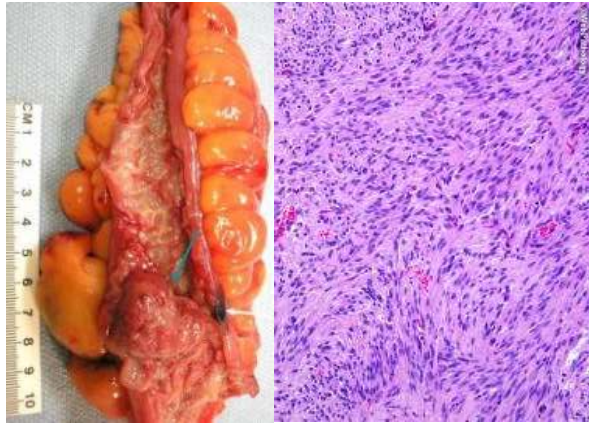
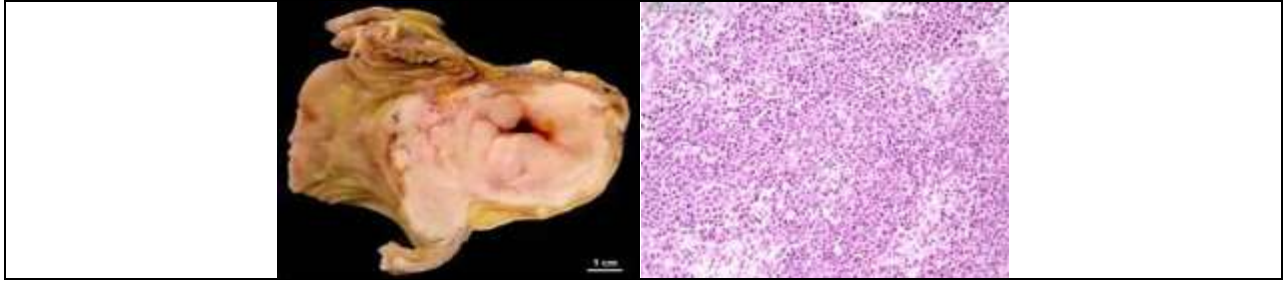


## XVII. Diseases of the Digestive System

<b>Sarcoma III-43.561</b>				
<b>A piece of intestine:</b>		<b>Shows a tumour</b>		
	<b>The tumour:</b>	<ul style="list-style-type: none"> <li>• <i>At the ileocecal junction</i></li> <li>• <i>Large in size</i></li> <li>• <i>Composed of two portions</i></li> <li>• <i>Somewhat well-defined</i></li> <li>• <i>Infiltrating the adjacent compressed tissue (malignancy)</i></li> <li>• <i>Non-capsulated</i></li> <li>• <i>Homogeneous (in general)</i></li> <li>• <i>Fleshy (in appearance)</i></li> <li>• <i>Opaque white (in colour)</i></li> <li>• <i>Soft in consistence in most parts</i></li> </ul>		
<b>Lymph nodes (regional):</b>		<ul style="list-style-type: none"> <li>• <i>Enlarged</i></li> <li>• <i>Fused together</i></li> <li>• <i>Infiltrated by the neoplastic tissue</i></li> </ul>		
				
<p><b>N.B.:</b>  <i>Histologically, it proved to be a lymphoma.</i>  <b>Sarcoma of the large intestine is rare or rather uncommon.</b>  <i>It may be</i></p> <ol style="list-style-type: none"> <li>1. <b>Fibrosarcoma,</b></li> <li>2. <b>Myosarcoma or</b></li> <li>3. <b>Malignant lymphoma.</b></li> </ol>				



*Apple core sign in -ray*