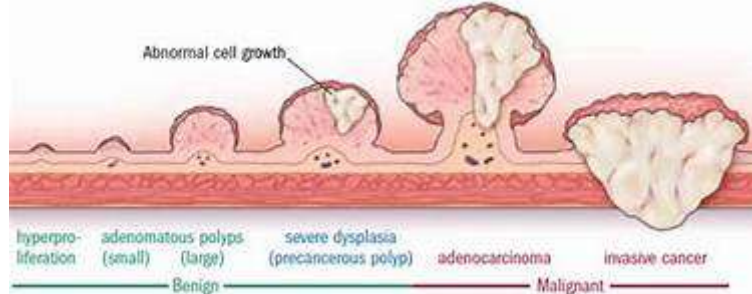


XVII. Diseases of the Digestive System

Adenomatous Polypi (papillomatous adenomata)

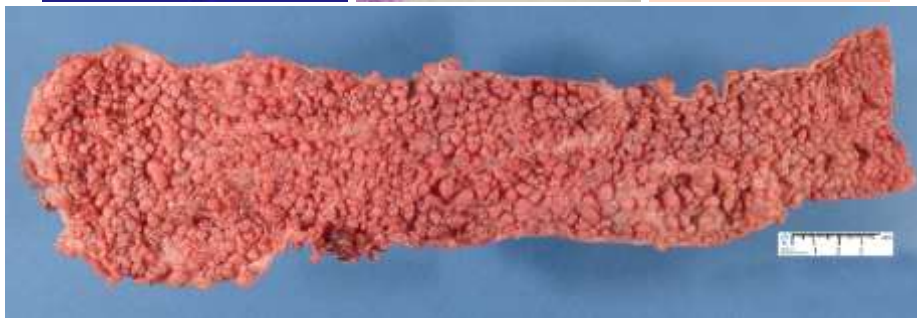
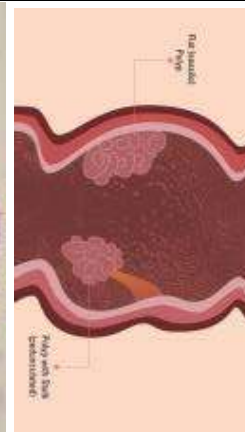
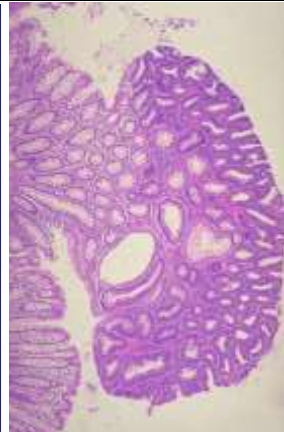


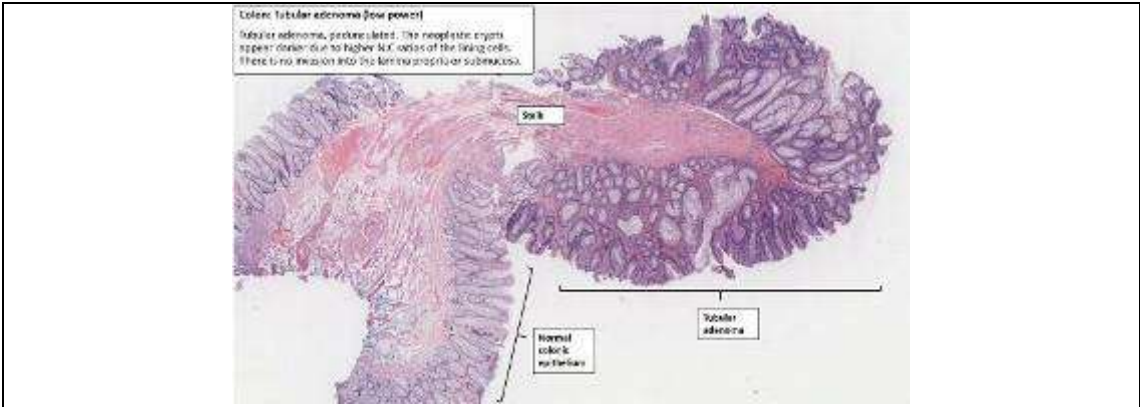
A piece of the rectum:

Shows projecting masses

Masses:

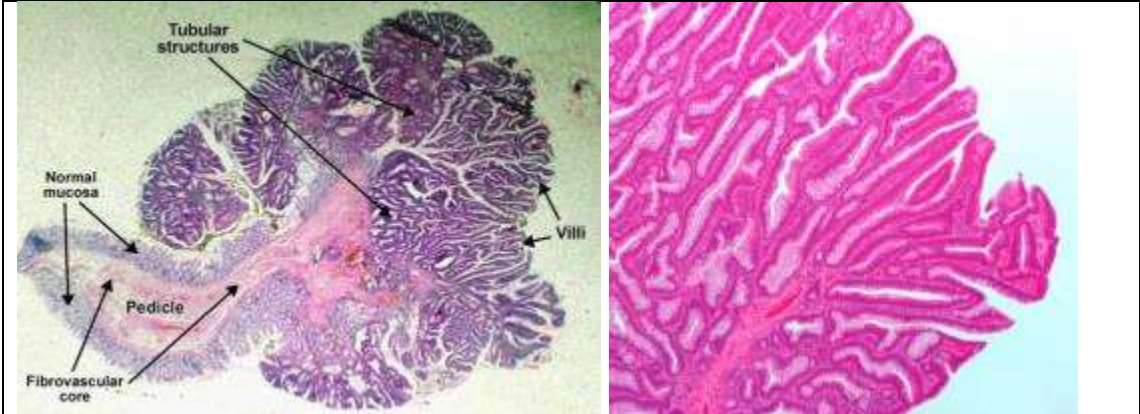
- Numerous
- Small in size
- Circumscribed and rounded in shape
- Pedunculated
- Soft-firm in consistence
- With smooth surface
- No evidence of inflammation in between masses



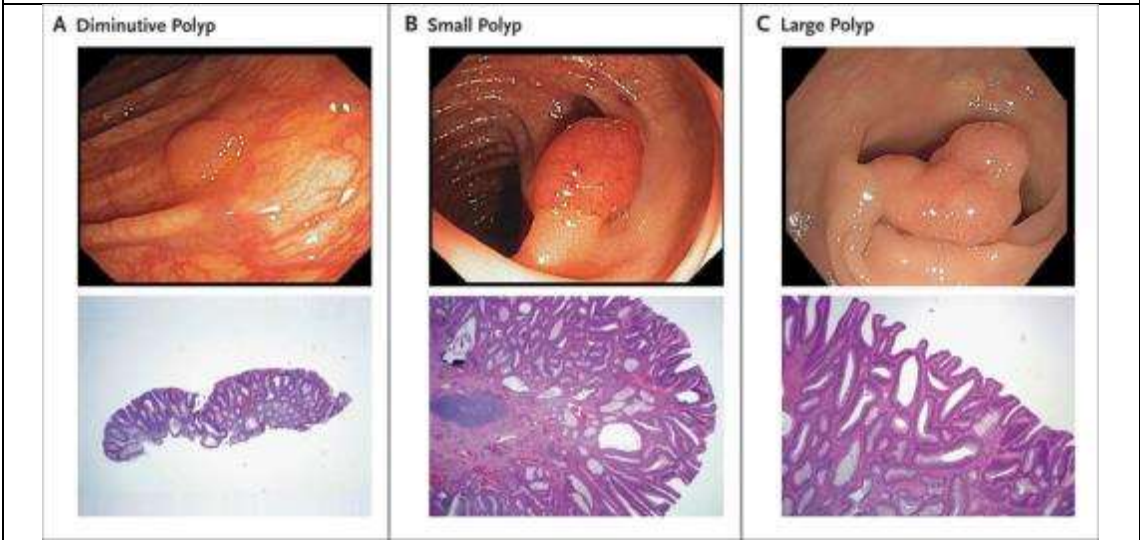


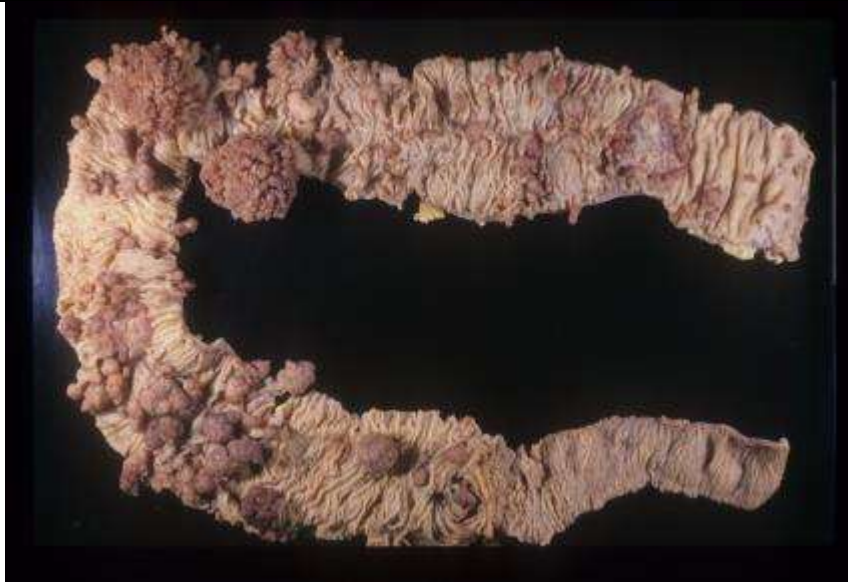
N.B.:
Histologically, it proved to be a benign tumour, namely an adenoma which is papillary in shape.

- They are either**
1. **Tubular (glandular)**
 2. **Papillary**
 3. **Mixed tubulo villous**



- *May be single or multiple*
- *Sessile or pedunculated*
- *May turn malignant*





Familial polyposis coli

