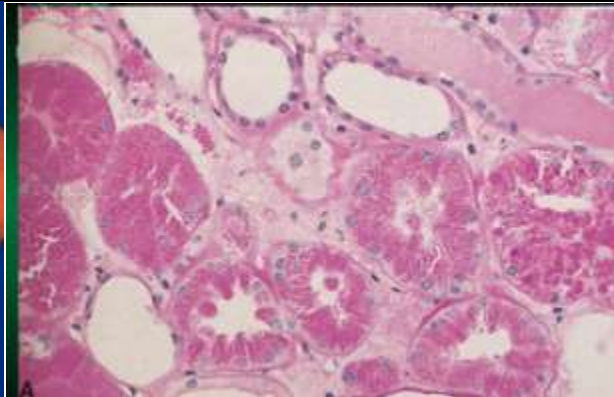


**XIX. 333**  
**DISEASES OF THE URINARY SYSTEM AND MALE GENITALIA**  
**(THE URINARY SYSTEM)**

<b>Albuminous Degeneration</b>		
<b>Kidney</b>	<b>Size:</b>	<ul style="list-style-type: none"> <li>• Enlarged and swollen (slightly)</li> </ul>
	<b>Capsule:</b>	<ul style="list-style-type: none"> <li>• Strips off easily,</li> <li>• Tense</li> </ul>
	<b>Subcapsular surface:</b>	<ul style="list-style-type: none"> <li>• Smooth</li> <li>• Pinkish-grey and pale</li> </ul>
	<b>Consistence:</b>	<ul style="list-style-type: none"> <li>• Softer than normal (soft-firm)</li> </ul>
	<b>Cut surface:</b>	<ul style="list-style-type: none"> <li>• Cloudy and blurred</li> </ul>
	<b>Cortex:</b>	<ul style="list-style-type: none"> <li>• Increased in thickness (wide)</li> <li>• <b>Is bulging through the tense capsule</b></li> <li>• Pale, opaque and cloudy</li> <li>• Uniformly whitish-greyish</li> </ul>
	<b>Medulla:</b>	<ul style="list-style-type: none"> <li>• Is about normal in thickness</li> <li>• Slightly congested (relatively)</li> <li>• Is differentiated from the cortex</li> <li>• Almost no gross change</li> </ul>



**N.B.I:**

- **Albuminous degeneration (cloudy swelling = parenchymatous degeneration)** has to be differentiated from **post-mortem kidney-change (autolytic process)** by microscopic examination.
- It is considered a mild change related to disturbance in protein metabolism due to toxins.
- **The increased microscopic picture granularity and cloudiness of the cytoplasm** is due to breaking down of **mitochondria** into smaller molecules → increase in osmotic pressure inside the cell → accumulation of fluid → swelling of cells → enlargement of the organ.
- It may indicate a **disturbance in the active transport of water from the cells.**

**Causative agencies:**

- *Infectious fevers,*
- *Toxins,*
- *Chemical poisons,*
- *Systemic anoxia,*
- *Mal-nutrition,*
- *Burns,*
- *Bacterial toxic-products and*
- *Any mild injurious agent that results in minor sickness of the cells.*

**N.B.2:**

This morphologic picture of the kidney, i.e. large pale and with subcapsular smooth surface, may be encountered in such conditions as

1. *The nephrotic syndrome,*
2. *Nephrosis, and*
3. *Diffuse glomerulonephritis* (early and intermediate stages).

