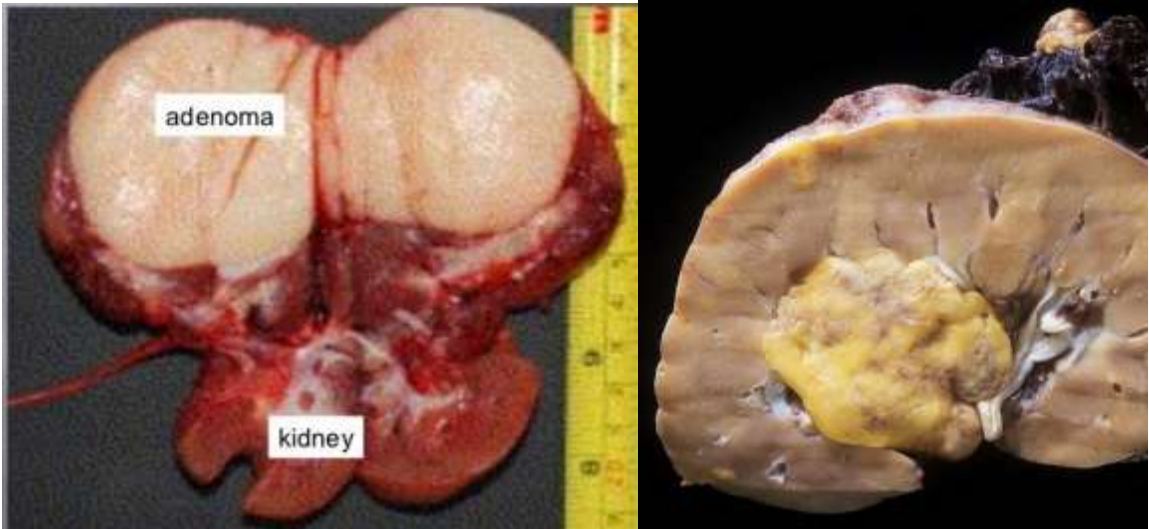


XIX. Diseases of the Urinary System

Adenoma			
Kidney:	Shows a tumour		
	The tumour:	In the cortex Single Small Circumscribed (as an apparently encapsulated nodule) Yellowish gray in colour With little fibrous bands Reveals a few minute cysts <i>"No invasion or destruction (benign)"</i>	
			
N.B.:			
<ul style="list-style-type: none"> • <i>Histologically, it proved to be an adenoma (of renal tubules).</i> • <i>It is a benign tumour which remains small for a very long time.</i> • <i>Occasionally, an adenoma may be cystic with papillary processes.</i> 			
Benign tumours of the kidney:			
(1) Fibroma: A small circumscribed nodule in the medulla (greyish-white and firm).			
(2) Lipoma: Very rare.			
(3) Cortical adenoma: Small and discrete.			
(4) Angioma:			

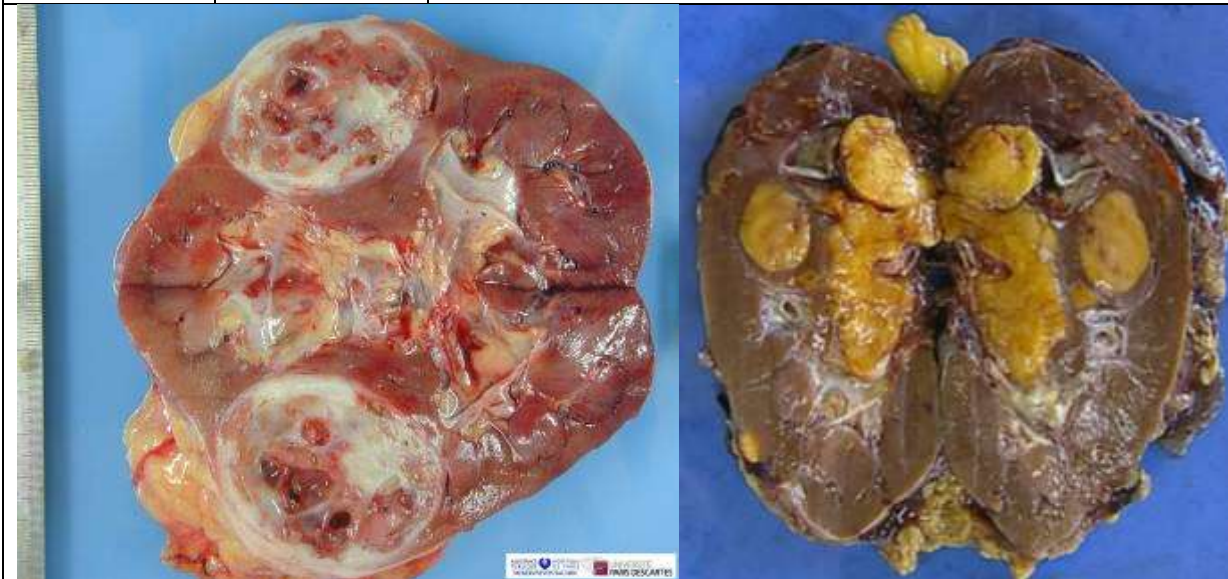
Hamartoma

Kidney:

- Shows nodules
- In the medulla

Nodules:

- Few in number
- Small
- Rounded
- Whitish-yellowish-grey
- Indistinct outline



N.B.:

- *Histologically, it proved to be a hamartoma (made up of an unorganized mixture of a fibro-fatty tissue in which are scattered narrow tubules, blood vessels and smooth muscle fibres).*
- It is a developmental defect in tissue-combination with a limited capacity for aberrant growth rather than a true tumour.

