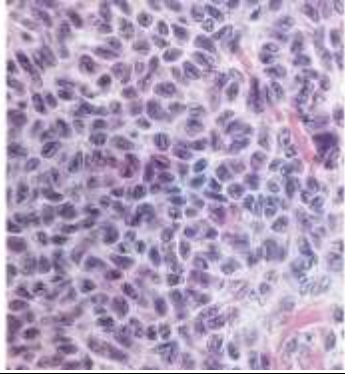
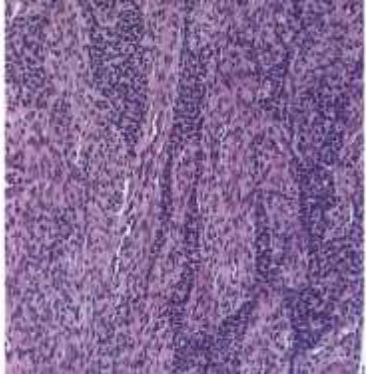
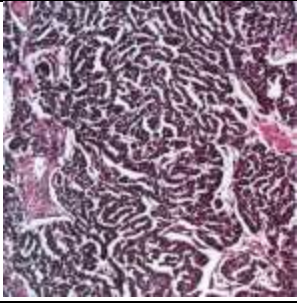

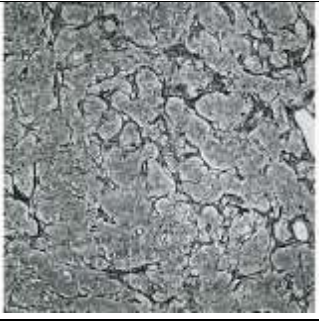
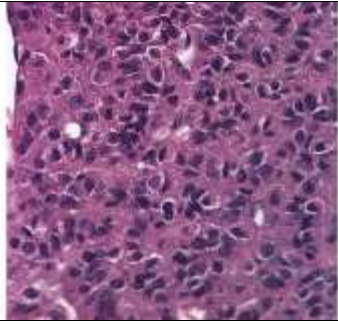
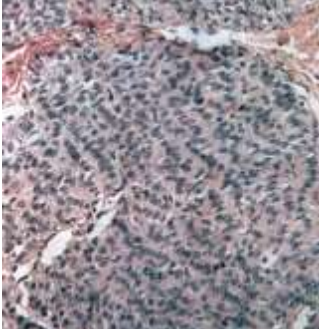
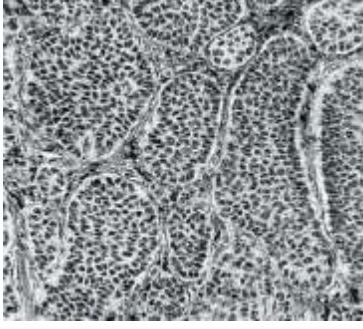
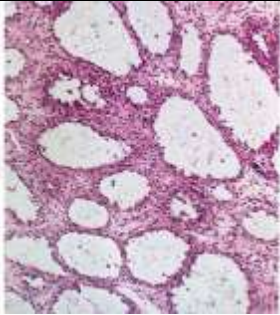
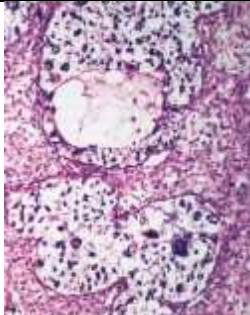
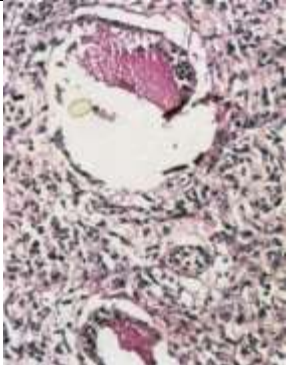
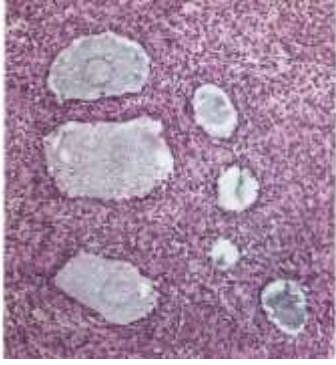
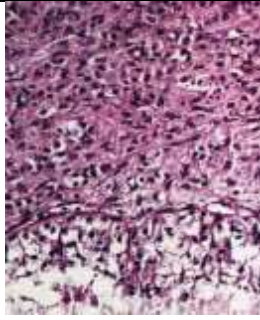


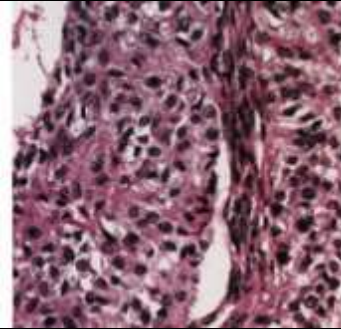
Microscopic pictures of granulosa cell tumour

	
<p>Adult granulosa cell tumour The cells have scanty cytoplasm and pale, oval and angular nuclei</p>	<p>Adult granulosa cell tumour Trabecular pattern The granulosa cells are growing in trabeculae and cords separated by cellular fibromatous tissue.</p>
	
<p>Adult granulosa cell tumour Gyriform pattern There is a zigzag arrangement of cords of granulosa cells.</p>	<p>Adult granulosa cell tumour Diffuse pattern The small cells have scanty cytoplasm</p>
	
<p>Adult granulosa cell tumour A reticulin stain shows fibrils surrounding nests and larger aggregates of granulosa cells</p>	<p>Adult granulosa cell tumour The tumour cells contain abundant eosinophilic & mostly pale, oval, and angular nuclei in a disorderly arrangement. A few nuclei have prominent nucleoli</p>

	
<p style="text-align: center;">Adult granulosa cell tumour Watered –silk (moiré-silk) pattern</p> <p>The tumour cells are arranged in parallel wavy rows</p>	<p style="text-align: center;">Adult granulosa cell tumour Insular Pattern</p> <p>The granulosa cells are growing in well delineated nests</p>
	
<p style="text-align: center;">Juvenile granulosa cell tumour</p> <p>Many follicles are lined by cells with atypical "hobnail" nuclei simulating a Tubulocystic clear cell carcinoma</p>	<p style="text-align: center;">Juvenile granulosa cell tumour</p> <p>Large, bizarre nuclei and a single follicle are present</p>
	
<p style="text-align: center;">Juvenile granulosa cell tumour</p> <p>The fluid within two follicles is mucocarinophilic</p>	<p style="text-align: center;">Juvenile granulosa cell tumour</p> <p>A solid pattern of cells is punctured by oval to round follicles different in size and containing eosinophilic fluid</p>



Juvenile granulosa cell tumour
The cell lining the follicles have abundant vacuolated cytoplasm. Adjacent theca cells contain abundant eosinophilic, focally vacuolated cytoplasm.



Juvenile granulosa cell tumour
A papilla is lined by cells with pale to eosinophilic cytoplasm and slightly atypical nuclei.
There is a superficial resemblance to a transitional cell neoplasm