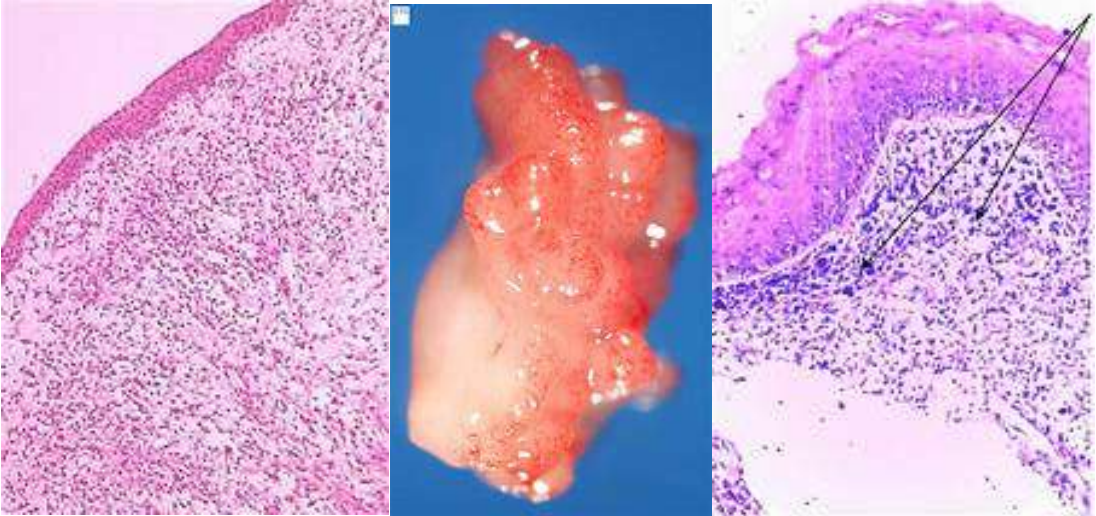
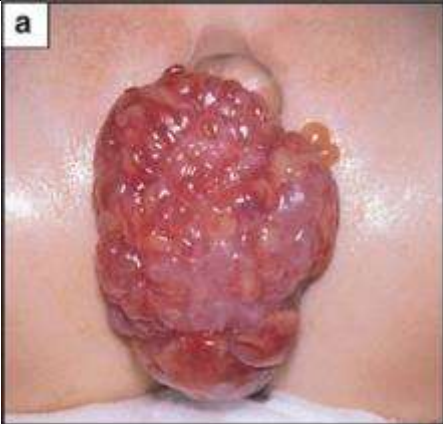
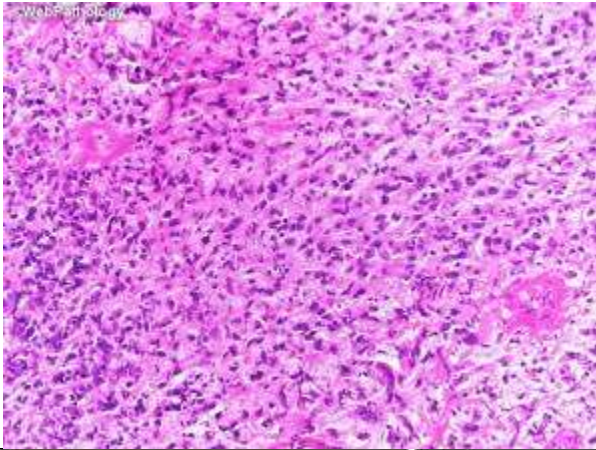


## XIX. Diseases of the Urinary System

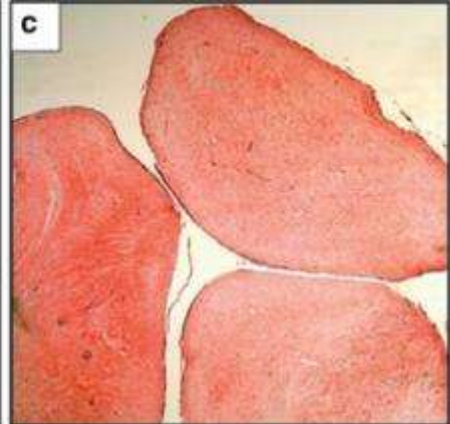
<b>Sarcoma botryoides (grape like)</b>	
<b>Urinary bladder:</b>	<ul style="list-style-type: none"> <li>• Is partially filled with a tumour</li> </ul>
<b>Cavity:</b>	<ul style="list-style-type: none"> <li>• Trabeculated Wall</li> </ul>
<b>Mucosa:</b>	<ul style="list-style-type: none"> <li>• Thickened and infiltrated by the tumour</li> </ul>
<b>The tumour:</b>	<ul style="list-style-type: none"> <li>• Is large in size (bulky)</li> <li>• <b>Grape-like in appearance</b></li> <li>• Invading and destroying (malignancy)</li> <li>• Fleshy and homogeneous</li> <li>• Opaque greyish-white</li> <li>• <b>Soft in consistence</b></li> </ul>
	
<p><b>N.B.:</b></p> <ul style="list-style-type: none"> <li>• The exact nature of this tumour could only be proved after microscopic examination</li> <li>• This is because sarcoma of the urinary bladder is rare, usually sessile and</li> <li>• It may be:             <ol style="list-style-type: none"> <li>(1) Myosarcoma,</li> <li>(2) Rhabdomyosarcoma,</li> <li>(3) Lymphocytic cell sarcoma or</li> <li>(4) Reticulum cell sarcoma.</li> </ol> </li> </ul>	



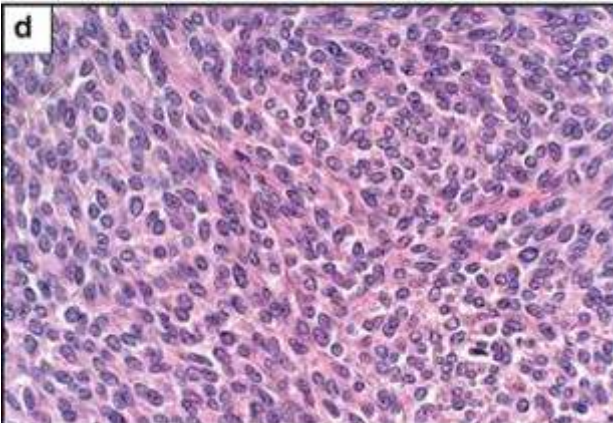
Sarcoma botryoides



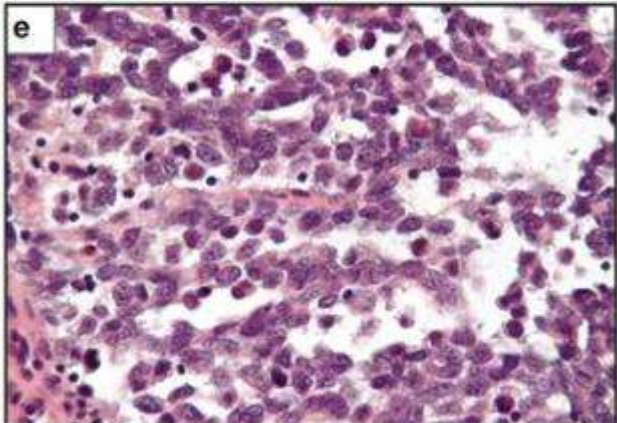
Sarcoma botryoides



Sarcoma botryoides



Embryonal rhabdomyosarcoma



Alveolar rhabdomyosarcoma